

CDH17 Monoclonal Antibody

Description

Product type	Antibody
Code	BT-MCA3903
Host	Mouse
Isotype	Mouse IgG1
Size	100µL, 50µL
Immunogen	Purified recombinant fragment of human CDH17 (AA: extra(600-707)) expressed in E. Coli.
Mol wt	92.2kDa
Species reactivity	Human
Clonality	Monoclonal
Recommended application	IHC
Concentration	N/A
Full name	N/A
Synonyms	HPT1;CDH16;HPT-1

This product is for research use only, not for use in human, therapeutic or diagnostic procedure.

Background

This gene is a member of the cadherin superfamily, genes encoding calcium-dependent, membrane-associated glycoproteins. The encoded protein is cadherin-like, consisting of an extracellular region, containing 7 cadherin domains, and a transmembrane region but lacking the conserved cytoplasmic domain. The protein is a component of the gastrointestinal tract and pancreatic ducts, acting as an intestinal proton-dependent peptide transporter in the first step in oral absorption of many medically important peptide-based drugs. The protein may also play a role in the morphological organization of liver and intestine. Alternative splicing results in multiple transcript variants.

Recommended Dilution

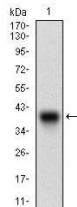
WB: 1:500 - 1:2000

IHC-p: 1:200 - 1:1000

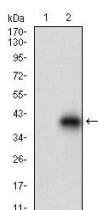
ELISA: 1:10000

Not yet tested in other applications.

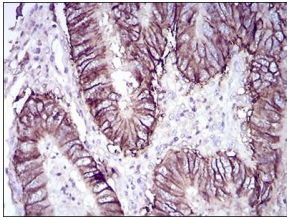
Images



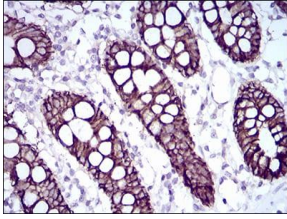
Western blot analysis using CDH17 mAb against human CDH17 (AA: extra(600-707)) recombinant protein. (Expected MW is 37.9 kDa)



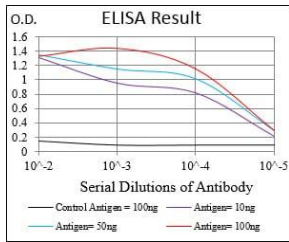
Western blot analysis using CDH17 mAb against HEK293 (1) and CDH17 (AA: extra(600-707))-hlgGfc transfected HEK293 (2) cell lysate.



Immunohistochemical analysis of paraffin-embedded rectum cancer tissues using CDH17 mouse mAb with DAB staining.



Immunohistochemical analysis of paraffin-embedded colon tissues using CDH17 mouse mAb with DAB staining.



Black line: Control Antigen (100 ng); Purple line: Antigen(10ng); Blue line: Antigen (50 ng); Red line: Antigen (100 ng);

Storage

Store at 4°C short term. Aliquot and store at -20°C long term.

501 Changsheng S Rd, Nanhu Dist, Jiaxing, Zhejiang, China

Tel: 86 21 31007137 | E-mail: save@bt-laboratory.com | www.bt-laboratory.com