

## MUC12 Monoclonal Antibody

### Description

<b>Product type</b>	Antibody
<b>Code</b>	BT-MCA3919
<b>Host</b>	Mouse
<b>Isotype</b>	Mouse IgG2b
<b>Size</b>	100µL, 50µL
<b>Immunogen</b>	Purified recombinant fragment of human MUC12 (AA: extra 371-592) expressed in E. Coli.
<b>Mol wt</b>	55.8kDa
<b>Species reactivity</b>	Others
<b>Clonality</b>	Monoclonal
<b>Recommended application</b>	ICC,FCM
<b>Concentration</b>	N/A
<b>Full name</b>	N/A
<b>Synonyms</b>	MUC11;MUC-11;

This product is for research use only, not for use in human, therapeutic or diagnostic procedure.

### Background

This gene encodes an integral membrane glycoprotein that is a member of the mucin family. Mucins are O-glycosylated proteins that play an essential role in forming protective mucous barriers on epithelial surfaces and have been implicated in epithelial renewal and differentiation. These glycoproteins also play a role in intracellular signaling. This protein is expressed on the apical membrane surface of epithelial cells that line the mucosal surfaces of many different tissues including the colon, pancreas, prostate, and uterus. The expression of this gene is downregulated in colorectal cancer tissue.

### Recommended Dilution

WB: 1:500 - 1:2000

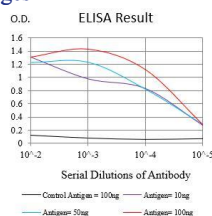
ICC: 1:50 - 1:200

FCM: 1:200 - 1:400

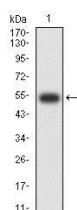
ELISA: 1:10000

Not yet tested in other applications.

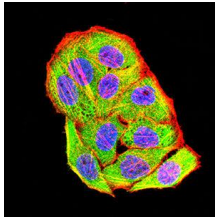
### Images



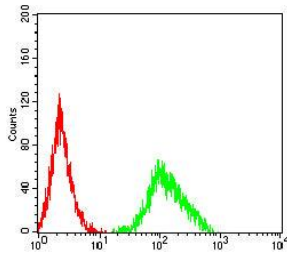
Black line: Control Antigen (100 ng);Purple line: Antigen (10ng); Blue line: Antigen (50 ng); Red line:Antigen (100 ng)



Western blot analysis using MUC12 mAb against human MUC12 (AA: extra 371-592) recombinant protein. (Expected MW is 53.3 kDa)



Immunofluorescence analysis of HeLa cells using MUC12 mouse mAb (green). Blue: DRAQ5 fluorescent DNA dye. Red: Actin filaments have been labeled with Alexa Fluor- 555 phalloidin. Secondary antibody from Fisher (Cat#: 35503)



Flow cytometric analysis of Jurkat cells using MUC12 mouse mAb (green) and negative control (red).

### Storage

Store at 4°C short term. Aliquot and store at -20°C long term.

501 Changsheng S Rd, Nanhu Dist, Jiaxing, Zhejiang, China

Tel: 86 21 31007137 | E-mail: [save@bt-laboratory.com](mailto:save@bt-laboratory.com) | [www.bt-laboratory.com](http://www.bt-laboratory.com)