

KRT9 Monoclonal Antibody

Description

Product type	Antibody
Code	BT-MCA3928
Host	Mouse
Isotype	Mouse IgG2b
Size	100µL, 50µL
Immunogen	Purified recombinant fragment of human KRT9 (AA: 153-460) expressed in E. Coli.
Mol wt	62kDa
Species reactivity	Others
Clonality	Monoclonal
Recommended application	WB,FCM
Concentration	N/A
Full name	N/A
Synonyms	K9;CK-9;EPPK

This product is for research use only, not for use in human, therapeutic or diagnostic procedure.

Background

This gene encodes the type I keratin 9, an intermediate filament chain expressed only in the terminally differentiated epidermis of palms and soles. Mutations in this gene cause epidermolytic palmoplantar keratoderma.

Recommended Dilution

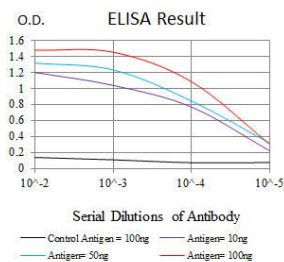
WB: 1:500 - 1:2000

FCM: 1:200 - 1:400

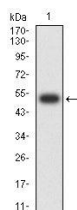
ELISA: 1:10000

Not yet tested in other applications.

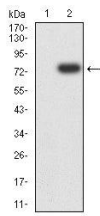
Images



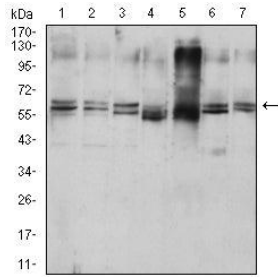
Black line: Control Antigen (100 ng);Purple line: Antigen (10ng); Blue line: Antigen (50 ng); Red line:Antigen (100 ng)



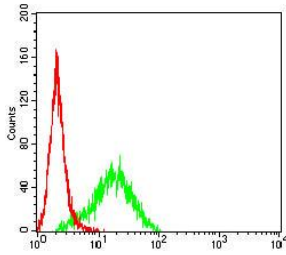
Western blot analysis using KRT9 mAb against human KRT9 (AA: 153-460) recombinant protein. (Expected MW is 51.7 kDa)



Western blot analysis using KRT9 mAb against HEK293-6e (1) and KRT9 (AA: 153-460)-hIgGFc transfected HEK293-6e (2) cell lysate.



Western blot analysis using KRT9 mouse mAb against HepG2 (1), MCF-7 (2), NIH/3T3 (3), rat heart (4), mouse heart (5), Hela (6), and HUVEC (7) cell lysate.



Flow cytometric analysis of Hela cells using KRT9 mouse mAb (green) and negative control (red).

Storage

Store at 4°C short term. Aliquot and store at -20°C long term.

501 Changsheng S Rd, Nanhu Dist, Jiaxing, Zhejiang, China

Tel: 86 21 31007137 | E-mail: save@bt-laboratory.com | www.bt-laboratory.com