

## CD68 Monoclonal Antibody

### Description

<b>Product type</b>	Antibody
<b>Code</b>	BT-MCA3937
<b>Host</b>	Mouse
<b>Isotype</b>	Mouse IgG1
<b>Size</b>	100µL, 50µL
<b>Immunogen</b>	Purified recombinant fragment of human CD68 (AA: 42-155) expressed in E. Coli.
<b>Mol wt</b>	37.4kDa
<b>Species reactivity</b>	Human
<b>Clonality</b>	Monoclonal
<b>Recommended application</b>	WB,IHC,ICC,FCM
<b>Concentration</b>	N/A
<b>Full name</b>	N/A
<b>Synonyms</b>	GP110;LAMP4;SCARD1

This product is for research use only, not for use in human, therapeutic or diagnostic procedure.

### Background

N/A

### Recommended Dilution

WB: 1:500 - 1:2000

IHC-p: 1:200 - 1:1000

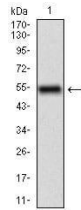
ICC: 1:200 - 1:1000

FCM: 1:200 - 1:400

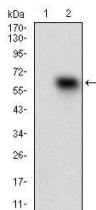
ELISA: 1:10000

Not yet tested in other applications.

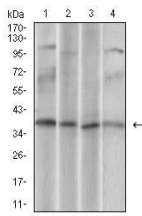
### Images



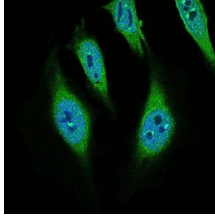
Western blot analysis using CD68 mAb against human CD68 (AA: 42-155) recombinant protein.  
(Expected MW is 37.4 kDa)



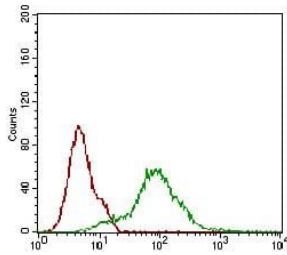
Western blot analysis using CD68 mAb against HEK293 (1) and CD68 (AA: 42-155)-hlgGfc transfected HEK293 (2) cell lysate.



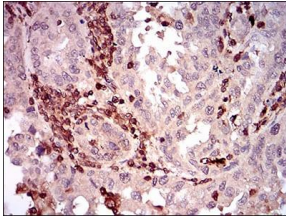
Western blot analysis using CD68 mouse mAb against U937 (1), HeLa (2), HepG2 (3), Jurkat (4) cell lysate.



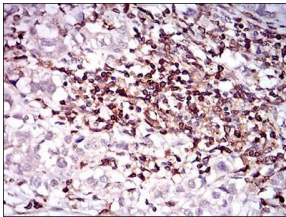
Immunofluorescence analysis of HeLa cells using CD68 mouse mAb (green). Blue: DRAQ5 fluorescent DNA dye.



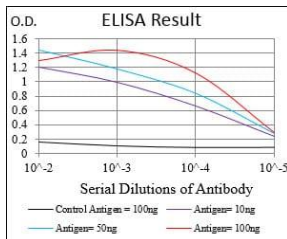
Flow cytometric analysis of HeLa cells using CD68 mouse mAb (green) and negative control (red).



Immunohistochemical analysis of paraffin-embedded endometrial cancer tissues using CD68 mouse mAb with DAB staining.



Immunohistochemical analysis of paraffin-embedded bladder cancer tissues using CD68 mouse mAb with DAB staining.



Black line: Control Antigen (100 ng); Purple line: Antigen(10ng); Blue line: Antigen (50 ng); Red line: Antigen (100 ng);

## Storage

Store at 4°C short term. Aliquot and store at -20°C long term.

501 Changsheng S Rd, Nanhui Dist, Jiaxing, Zhejiang, China

Tel: 86 21 31007137 | E-mail: [save@bt-laboratory.com](mailto:save@bt-laboratory.com) | [www.bt-laboratory.com](http://www.bt-laboratory.com)