

## RAN Monoclonal Antibody

### Description

<b>Product type</b>	Antibody
<b>Code</b>	BT-MCA3940
<b>Host</b>	Mouse
<b>Isotype</b>	Mouse IgG1
<b>Size</b>	100µL, 50µL
<b>Immunogen</b>	Purified recombinant fragment of human RAN (AA: 1-216) expressed in E. Coli.
<b>Mol wt</b>	24.4kDa
<b>Species reactivity</b>	Human,Mouse,Monkey,Rat
<b>Clonality</b>	Monoclonal
<b>Recommended application</b>	WB,IHC,ICC,FCM
<b>Concentration</b>	N/A
<b>Full name</b>	N/A
<b>Synonyms</b>	TC4;Gsp1;ARA24

This product is for research use only, not for use in human, therapeutic or diagnostic procedure.

### Background

N/A

### Recommended Dilution

WB: 1:500 - 1:2000

IHC-p: 1:200 - 1:1000

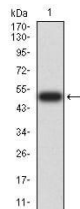
ICC: 1:200 - 1:1000

FCM: 1:200 - 1:400

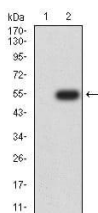
ELISA: 1:10000

Not yet tested in other applications.

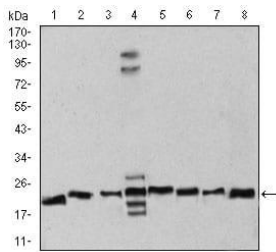
### Images



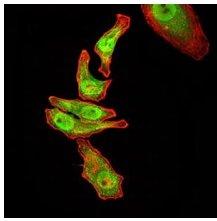
Western blot analysis using RAN mAb against human RAN (AA: 1-216) recombinant protein.  
(Expected MW is 50.4 kDa)



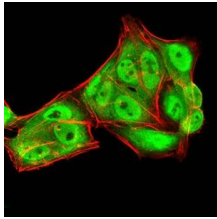
Western blot analysis using RAN mAb against HEK293 (1) and RAN (AA: 1-216)-hIgGFc transfected HEK293 (2) cell lysate.



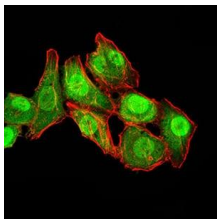
Western blot analysis using RAN mouse mAb against HeLa (1), NIH/3T3 (2), A431 (3), C6 (4), Jurkat (5), HeLa (6), COS7 (7), and Jurkat (8) cell lysate.



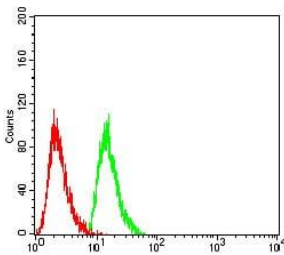
Immunofluorescence analysis of GC-7901 cells using RAN mouse mAb (green). Blue: DRAQ5 fluorescent DNA dye. Red: Actin filaments have been labeled with Alexa Fluor- 555 phalloidin. Secondary antibody from Fisher (Cat#: 35503)



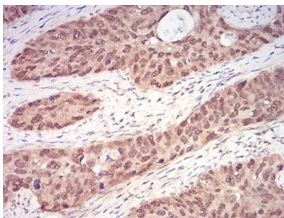
Immunofluorescence analysis of HeLa cells using RAN mouse mAb (green). Blue: DRAQ5 fluorescent DNA dye. Red: Actin filaments have been labeled with Alexa Fluor- 555 phalloidin. Secondary antibody from Fisher (Cat#: 35503)



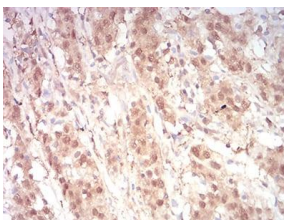
Immunofluorescence analysis of HepG2 cells using RAN mouse mAb (green). Blue: DRAQ5 fluorescent DNA dye. Red: Actin filaments have been labeled with Alexa Fluor- 555 phalloidin. Secondary antibody from Fisher (Cat#: 35503)



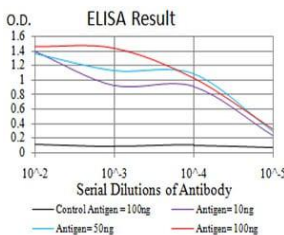
Flow cytometric analysis of HeLa cells using RAN mouse mAb (green) and negative control (red).



Immunohistochemical analysis of paraffin-embedded cervical cancer tissues using RAN mouse mAb with DAB staining.



Immunohistochemical analysis of paraffin-embedded stomach cancer tissues using RAN mouse mAb with DAB staining.



Black line: Control Antigen (100 ng);Purple line: Antigen (10ng); Blue line: Antigen (50 ng); Red line:Antigen (100 ng)

## Storage

Store at 4°C short term. Aliquot and store at -20°C long term.

501 Changsheng S Rd, Nanhu Dist, Jiaxing, Zhejiang, China

Tel: 86 21 31007137 | E-mail: [save@bt-laboratory.com](mailto:save@bt-laboratory.com) | [www.bt-laboratory.com](http://www.bt-laboratory.com)