

## NT5E Monoclonal Antibody

### Description

<b>Product type</b>	Antibody
<b>Code</b>	BT-MCA3945
<b>Host</b>	Mouse
<b>Isotype</b>	Mouse IgG1
<b>Size</b>	100µL, 50µL
<b>Immunogen</b>	Purified recombinant fragment of human NT5E (AA: 30-250) expressed in E. Coli.
<b>Mol wt</b>	63.4kDa
<b>Species reactivity</b>	Human
<b>Clonality</b>	Monoclonal
<b>Recommended application</b>	WB,IHC
<b>Concentration</b>	N/A
<b>Full name</b>	N/A
<b>Synonyms</b>	NT;eN;NT5;NTE;eNT;CD73;E5NT;CALJA

This product is for research use only, not for use in human, therapeutic or diagnostic procedure.

### Background

N/A

### Recommended Dilution

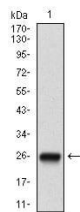
WB: 1:500 - 1:2000

IHC-p: 1:200 - 1:1000

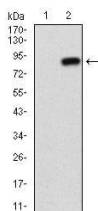
ELISA: 1:10000

Not yet tested in other applications.

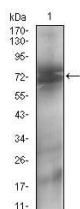
### Images



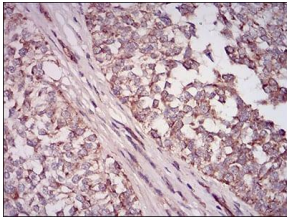
Western blot analysis using NT5E mAb against human NT5E (AA: ) recombinant protein. (Expected MW is 26.6 kDa)



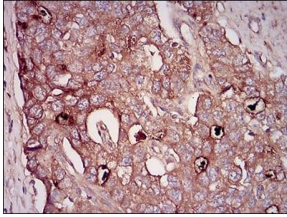
Western blot analysis using NT5E mAb against HEK293 (1) and NT5E (AA: 30-250)-hlgGfC transfected HEK293 (2) cell lysate.



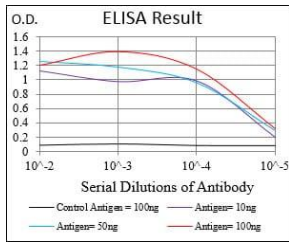
Western blot analysis using NT5E mouse mAb against A431 (1) cell lysate.



Immunohistochemical analysis of paraffin-embedded bladder cancer tissues using NT5E mouse mAb with DAB staining.



Immunohistochemical analysis of paraffin-embedded esophagus cancer tissues using NT5E mouse mAb with DAB staining.



Black line: Control Antigen (100 ng); Purple line: Antigen(10ng); Blue line: Antigen (50 ng); Red line: Antigen (100 ng);

### Storage

Store at 4°C short term. Aliquot and store at -20°C long term.

501 Changsheng S Rd, Nanhu Dist, Jiaxing, Zhejiang, China

Tel: 86 21 31007137 | E-mail: [save@bt-laboratory.com](mailto:save@bt-laboratory.com) | [www.bt-laboratory.com](http://www.bt-laboratory.com)