

Bpifa2 Monoclonal Antibody

Description

Product type	Antibody
Code	BT-MCA3948
Host	Mouse
Isotype	Mouse IgG1
Size	100µL, 50µL
Immunogen	Purified recombinant fragment of mouse mSplunc2 (AA: 16-169) expressed in E. Coli.
Mol wt	24.8kd
Species reactivity	Human
Clonality	Monoclonal
Recommended application	IHC,FCM
Concentration	N/A
Full name	N/A
Synonyms	Psp;Bpifa2e;mSplunc2

This product is for research use only, not for use in human, therapeutic or diagnostic procedure.

Background

N/A

Recommended Dilution

WB: 1:500 - 1:2000

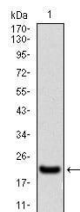
IHC-p: 1:200 - 1:1000

FCM: 1:200 - 1:400

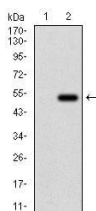
ELISA: 1:10000

Not yet tested in other applications.

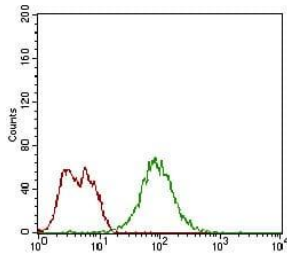
Images



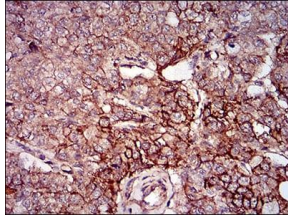
Western blot analysis using mSplunc2 mAb against mSplunc2 (AA: 16-169) recombinant protein.
(Expected MW is 18.5 kDa)



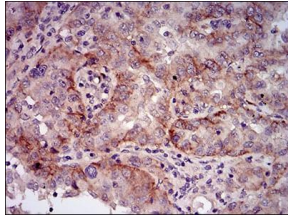
Western blot analysis using mSplunc2 mAb against HEK293 (1) and mSplunc2 (AA: 16-169)-hlgGfc transfected HEK293 (2) cell lysate.



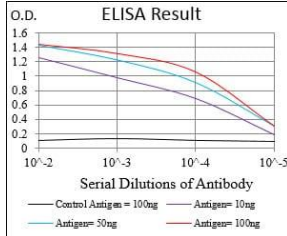
Flow cytometric analysis of MCF-7 cells using mSplunc2 mouse mAb (green) and negative control (red).



Immunohistochemical analysis of paraffin-embedded prostate cancer tissues using mSplunc2 mouse mAb with DAB staining.



Immunohistochemical analysis of paraffin-embedded endometrial cancer tissues using mSplunc2 mouse mAb with DAB staining.



Black line: Control Antigen (100 ng); Purple line: Antigen(10ng); Blue line: Antigen (50 ng); Red line: Antigen (100 ng);

Storage

Store at 4°C short term. Aliquot and store at -20°C long term.

501 Changsheng S Rd, Nanhu Dist, Jiaxing, Zhejiang, China

Tel: 86 21 31007137 | E-mail: save@bt-laboratory.com | www.bt-laboratory.com