

CD49E Monoclonal Antibody

Description

Product type	Antibody
Code	BT-MCA3960
Host	Mouse
Isotype	Mouse IgG1
Size	100 μ L, 50 μ L
Immunogen	Purified recombinant fragment of human CD49E (AA: extra 111-253) expressed in E. Coli.
Mol wt	114.5kDa
Species reactivity	Human
Clonality	Monoclonal
Recommended application	FCM
Concentration	N/A
Full name	N/A
Synonyms	ITGA5;FNRA;VLA-5;VLA5A

This product is for research use only, not for use in human, therapeutic or diagnostic procedure.

Background

The product of this gene belongs to the integrin alpha chain family. Integrins are heterodimeric integral membrane proteins composed of an alpha subunit and a beta subunit that function in cell surface adhesion and signaling. The encoded preproprotein is proteolytically processed to generate light and heavy chains that comprise the alpha 5 subunit. This subunit associates with the beta 1 subunit to form a fibronectin receptor. This integrin may promote tumor invasion, and higher expression of this gene may be correlated with shorter survival time in lung cancer patients. Note that the integrin alpha 5 and integrin alpha V subunits are encoded by distinct genes.

Recommended Dilution

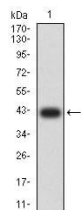
WB: 1:500 - 1:2000

FCM: 1:200 - 1:400

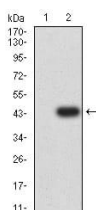
ELISA: 1:10000

Not yet tested in other applications.

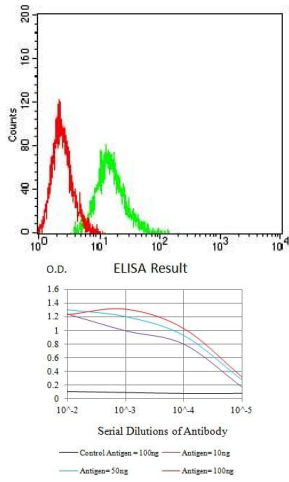
Images



Western blot analysis using CD49E mAb against human CD49E (AA: extra 111-253) recombinant protein. (Expected MW is 41.8 kDa)



Western blot analysis using CD49E mAb against HEK293 (1) and CD49E (AA: extra 111-253)-hlgGfC transfected HEK293 (2) cell lysate.



Flow cytometric analysis of HL-60 cells using CD49E mouse mAb (green) and negative control (red).

Black line: Control Antigen (100 ng);Purple line: Antigen (10ng); Blue line: Antigen (50 ng); Red line:Antigen (100 ng)

Storage

Store at 4°C short term. Aliquot and store at -20°C long term.

501 Changsheng S Rd, Nanhu Dist, Jiaxing, Zhejiang, China

Tel: 86 21 31007137 | E-mail: save@bt-laboratory.com | www.bt-laboratory.com