

## MIB1 Monoclonal Antibody

### Description

<b>Product type</b>	Antibody
<b>Code</b>	BT-MCA3968
<b>Host</b>	Mouse
<b>Isotype</b>	Mouse IgG1
<b>Size</b>	100µL, 50µL
<b>Immunogen</b>	Purified recombinant fragment of human MIB1 (AA: 6-221) expressed in E. Coli.
<b>Mol wt</b>	110kDa
<b>Species reactivity</b>	Human,Monkey
<b>Clonality</b>	Monoclonal
<b>Recommended application</b>	WB,FCM
<b>Concentration</b>	N/A
<b>Full name</b>	N/A
<b>Synonyms</b>	MIB;DIP1;ZZZ6;DIP-1;LVNC7;ZZANK2

This product is for research use only, not for use in human, therapeutic or diagnostic procedure.

### Background

N/A

### Recommended Dilution

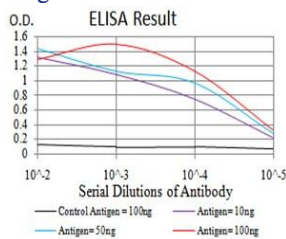
WB: 1:500 - 1:2000

FCM: 1:200 - 1:400

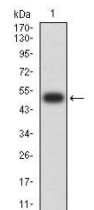
ELISA: 1:10000

Not yet tested in other applications.

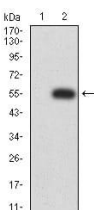
### Images



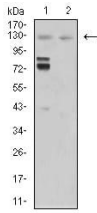
Black line: Control Antigen (100 ng);Purple line: Antigen (10ng); Blue line: Antigen (50 ng); Red line:Antigen (100 ng)



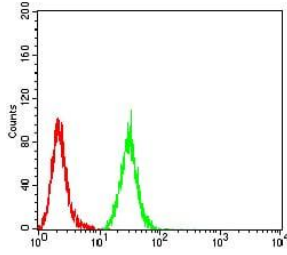
Western blot analysis using MIB1 mAb against human MIB1 (AA: 6-221) recombinant protein. (Expected MW is 50.1 kDa)



Western blot analysis using MIB1 mAb against HEK293 (1) and MIB1 (AA: 6-221)-hIgGfc transfected HEK293 (2) cell lysate.



Western blot analysis using MIB1 mouse mAb against HeLa (1) and COS7 (2) cell lysate.



Flow cytometric analysis of HeLa cells using MIB1 mouse mAb (green) and negative control (red).

### Storage

Store at 4°C short term. Aliquot and store at -20°C long term.

501 Changsheng S Rd, Nanhu Dist, Jiaxing, Zhejiang, China

Tel: 86 21 31007137 | E-mail: [save@bt-laboratory.com](mailto:save@bt-laboratory.com) | [www.bt-laboratory.com](http://www.bt-laboratory.com)