

PHC1 Monoclonal Antibody

Description

Product type	Antibody
Code	BT-MCA3971
Host	Mouse
Isotype	Mouse IgG1
Size	100µL, 50µL
Immunogen	Purified recombinant fragment of human PHC1 (AA: 758-1004) expressed in E. Coli.
Mol wt	105.5kDa
Species reactivity	Human
Clonality	Monoclonal
Recommended application	FCM
Concentration	N/A
Full name	N/A
Synonyms	EDR1;HPH1;RAE28

This product is for research use only, not for use in human, therapeutic or diagnostic procedure.

Background

This gene is a homolog of the Drosophila polyhomeotic gene, which is a member of the Polycomb group of genes. The gene product is a component of a multimeric protein complex that contains EDR2 and the vertebrate Polycomb protein BMH1. The gene product, the EDR2 protein, and the Drosophila polyhomeotic protein share 2 highly conserved domains, named homology domains I and II. These domains are involved in protein-protein interactions and may mediate heterodimerization of the protein encoded by this gene and the EDR2 protein.

Recommended Dilution

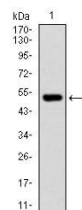
WB: 1:500 - 1:2000

FCM: 1:200 - 1:400

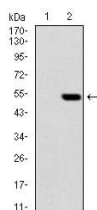
ELISA: 1:10000

Not yet tested in other applications.

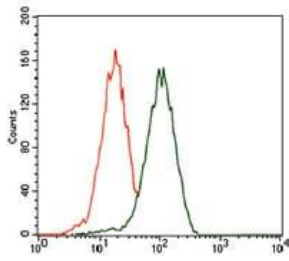
Images



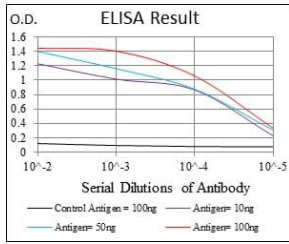
Western blot analysis using PHC1 mAb against human PHC1 recombinant protein. (Expected MW is 52.8 kDa)



Western blot analysis using PHC1 mAb against HEK293 (1) and PHC1 (AA: 758-1004)-hIgGfc transfected HEK293 (2) cell lysate.



Flow cytometric analysis of HEK293 cells using PHC1 mouse mAb (green) and negative control (red).



Black line: Control Antigen (100 ng); Purple line: Antigen(10ng); Blue line: Antigen (50 ng); Red line: Antigen (100 ng);

Storage

Store at 4°C short term. Aliquot and store at -20°C long term.

501 Changsheng S Rd, Nanhu Dist, Jiaxing, Zhejiang, China

Tel: 86 21 31007137 | E-mail: save@bt-laboratory.com | www.bt-laboratory.com