

KLHL25 Monoclonal Antibody

Description

Product type	Antibody
Code	BT-MCA3978
Host	Mouse
Isotype	Mouse IgG2b
Size	100 μ L, 50 μ L
Immunogen	Purified recombinant fragment of human KLHL25 expressed in E. Coli.
Mol wt	65kDa
Species reactivity	Human
Clonality	Monoclonal
Recommended application	Others
Concentration	N/A
Full name	N/A
Synonyms	ENC2;ENC-2;FLJ12587;FLJ45015;KLHL25

This product is for research use only, not for use in human, therapeutic or diagnostic procedure.

Background

KLHL25 (ectoderm-neural cortex protein 2, ENC2) is a cytoplasmic protein that contains six Kelch regions and a single BTB (POZ) domain. KLHL25 is highly homologous to another Kelch-like protein, ENC1, and it is believed to operate in a manner similar to other Kelch-domain containing proteins. Kelch-domain repeat containing proteins often act as modifiers of Actin fibers. Expressed early in embryogenesis, ENC1 helps to mediate neuronal process formation. It also appears to have a role in neural crest cell differentiation. KLHL25 likely functions as a substrate specific adapter for protein ubiquitinating complexes. KLHL25 is expressed in most tissues with highest expression in brain and liver.

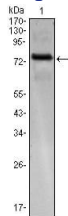
Recommended Dilution

WB: 1:500 - 1:2000

ELISA: 1:10000

Not yet tested in other applications.

Images



Western blot analysis using KLHL25 mAb against KLHL25(AA: 2-230)-hIgGFc transfected HEK293 cell.

Storage

Store at 4°C short term. Aliquot and store at -20°C long term.