

FSHB Monoclonal Antibody

Description

Product type	Antibody
Code	BT-MCA4003
Host	Mouse
Isotype	Mouse IgG1
Size	100µL, 50µL
Immunogen	Purified recombinant fragment of human FSHB (AA: 19-129) expressed in E. Coli.
Mol wt	14.7kDa
Species reactivity	Human
Clonality	Monoclonal
Recommended application	WB,FCM
Concentration	N/A
Full name	N/A
Synonyms	N/A

This product is for research use only, not for use in human, therapeutic or diagnostic procedure.

Background

The pituitary glycoprotein hormone family includes follicle-stimulating hormone, luteinizing hormone, chorionic gonadotropin, and thyroid-stimulating hormone. All of these glycoproteins consist of an identical alpha subunit and a hormone-specific beta subunit. This gene encodes the beta subunit of follicle-stimulating hormone. In conjunction with luteinizing hormone, follicle-stimulating hormone induces egg and sperm production. Alternative splicing results in two transcript variants encoding the same protein.

Recommended Dilution

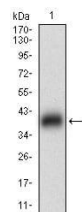
WB: 1:500 - 1:2000

FCM: 1:200 - 1:400

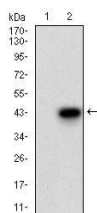
ELISA: 1:10000

Not yet tested in other applications.

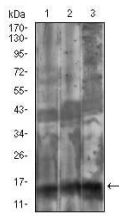
Images



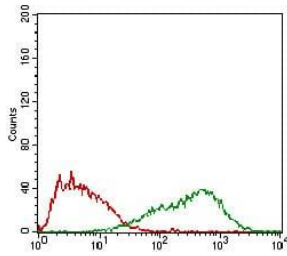
Western blot analysis using FSHB mAb against human FSHB (AA: 19-129) recombinant protein.
(Expected MW is 34.8 kDa)



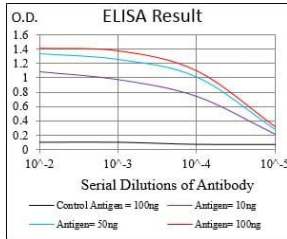
Western blot analysis using FSHB mAb against HEK293 (1) and FSHB (AA: 19-129)-hIgGFc transfected HEK293 (2) cell lysate.



Western blot analysis using FSHB mouse mAb against Cos7 (1), HepG2 (2), HEK293 (3) cell lysate.



Flow cytometric analysis of HepG2 cells using FSHB mouse mAb (green) and negative control (red).



Black line: Control Antigen (100 ng); Purple line: Antigen(10ng); Blue line: Antigen (50 ng); Red line: Antigen (100 ng);

Storage

Store at 4°C short term. Aliquot and store at -20°C long term.

501 Changsheng S Rd, Nanhu Dist, Jiaxing, Zhejiang, China

Tel: 86 21 31007137 | E-mail: save@bt-laboratory.com | www.bt-laboratory.com