

CK1 Monoclonal Antibody

Description

Product type	Antibody
Code	BT-MCA4006
Host	Mouse
Isotype	Mouse IgG1
Size	100µL, 50µL
Immunogen	Purified recombinant fragment of CK1 expressed in E. Coli.
Mol wt	N/A
Species reactivity	Human
Clonality	Monoclonal
Recommended application	IHC
Concentration	N/A
Full name	N/A
Synonyms	K1;CK1;EHK;EHK1;EPPK;KRT1A;NEPPK

This product is for research use only, not for use in human, therapeutic or diagnostic procedure.

Background

CK1 (also designated Cytokeratin 1 or KRT1),with 644-amino acid protein (about 70kDa), is a member of the keratin family. Cytokeratins play a critical role in differentiation and tissue specialization, and they function to maintain the overall structural integrity of epithelial cells. CK1 consist of basic or neutral proteins which are arranged in pairs of heterotypic keratin chains coexpressed during differentiation of simple and stratified epithelial tissues. CK1 is specifically expressed in the spinous and granular layers of the epidermis with family member KRT10 and mutations in these genes have been associated with bullous congenital ichthyosiform erythroderma.

Recommended Dilution

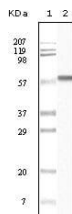
WB: 1:500 - 1:2000

IHC-p: 1:200 - 1:1000

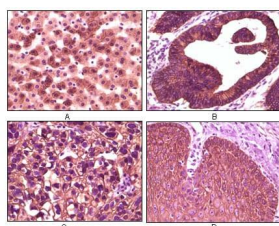
ELISA: 1:10000

Not yet tested in other applications.

Images



Western blot analysis using CK1 mouse mAb against truncated CK1 recombinant protein.



Immunohistochemical analysis of paraffin-embedded human liver tissue (A), colon carcinoma (B), lung carcinoma (C) and esophagus tissue (D), showing membrane localization using CK1 mouse mAb with DAB staining.

Storage

Store at 4°C short term. Aliquot and store at -20°C long term.

501 Changsheng S Rd, Nanhu Dist, Jiaxing, Zhejiang, China

Tel: 86 21 31007137 | E-mail: save@bt-laboratory.com | www.bt-laboratory.com