

LRP1B Monoclonal Antibody

Description

Product type	Antibody
Code	BT-MCA4008
Host	Mouse
Isotype	Mouse IgG2a
Size	100µL, 50µL
Immunogen	Purified recombinant fragment of human LRP1B (AA: extra 25-161) expressed in E. Coli.
Mol wt	515.5kDa
Species reactivity	Human
Clonality	Monoclonal
Recommended application	FCM
Concentration	N/A
Full name	N/A
Synonyms	LRP-1B;LRPDIT;LRP-DIT

This product is for research use only, not for use in human, therapeutic or diagnostic procedure.

Background

This gene encodes a member of the low density lipoprotein (LDL) receptor family. These receptors play a wide variety of roles in normal cell function and development due to their interactions with multiple ligands. Disruption of this gene has been reported in several types of cancer.

Recommended Dilution

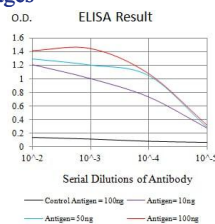
WB: 1:500 - 1:2000

FCM: 1:200 - 1:400

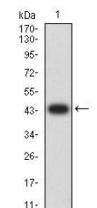
ELISA: 1:10000

Not yet tested in other applications.

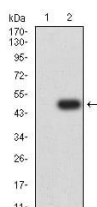
Images



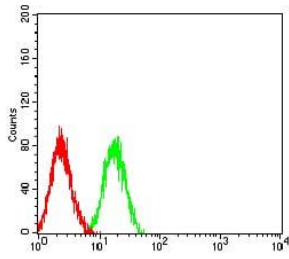
Black line: Control Antigen (100 ng);Purple line: Antigen (10ng); Blue line: Antigen (50 ng); Red line:Antigen (100 ng)



Western blot analysis using LRP1B mAb against human LRP1B (AA: extra 25-161) recombinant protein. (Expected MW is 45.1 kDa)



Western blot analysis using LRP1B mAb against HEK293 (1) and LRP1B (AA: extra 25-161)-hIgGfc transfected HEK293 (2) cell lysate.



Flow cytometric analysis of HL-60 cells using LRP1B mouse mAb (green) and negative control (red).

Storage

Store at 4°C short term. Aliquot and store at -20°C long term.

501 Changsheng S Rd, Nanhu Dist, Jiaxing, Zhejiang, China

Tel: 86 21 31007137 | E-mail: save@bt-laboratory.com | www.bt-laboratory.com