

CHRNA3 Monoclonal Antibody

Description

| | |
|--------------------------------|--|
| Product type | Antibody |
| Code | BT-MCA4015 |
| Host | Mouse |
| Isotype | Mouse IgG1 |
| Size | 100µL, 50µL |
| Immunogen | Purified recombinant fragment of human CHRNA3 (AA: 32-240) expressed in E. Coli. |
| Mol wt | 57.5kDa |
| Species reactivity | Human |
| Clonality | Monoclonal |
| Recommended application | ICC,FCM |
| Concentration | N/A |
| Full name | N/A |
| Synonyms | LNCR2;PAOD2;NACHRA3 |

This product is for research use only, not for use in human, therapeutic or diagnostic procedure.

Background

N/A

Recommended Dilution

WB: 1:500 - 1:2000

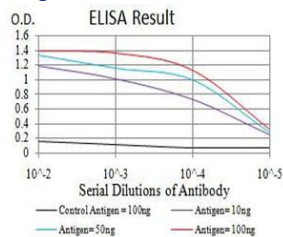
ICC: 1:200 - 1:1000

FCM: 1:200 - 1:400

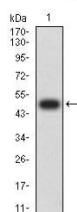
ELISA: 1:10000

Not yet tested in other applications.

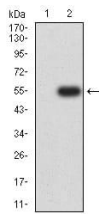
Images



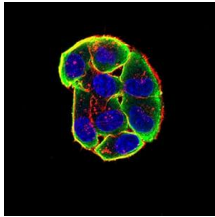
Black line: Control Antigen (100 ng);Purple line: Antigen (10ng); Blue line: Antigen (50 ng); Red line:Antigen (100 ng)



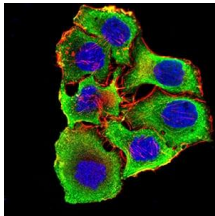
Western blot analysis using CHRNA3 mAb against human CHRNA3 (AA: 32-240) recombinant protein. (Expected MW is 50.6 kDa)



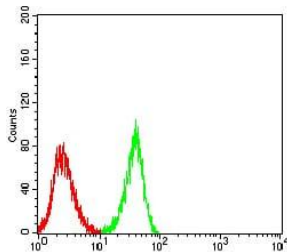
Western blot analysis using CHRNA3 mAb against HEK293 (1) and CHRNA3 (AA: 32-240)-hlgGFc transfected HEK293 (2) cell lysate.



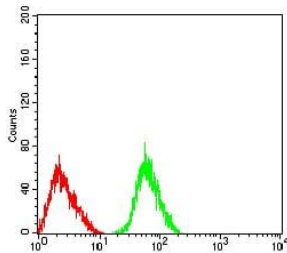
Immunofluorescence analysis of HeLa cells using CHRNA3 mouse mAb (green). Blue: DRAQ5 fluorescent DNA dye. Red: Actin filaments have been labeled with Alexa Fluor- 555 phalloidin. Secondary antibody from Fisher (Cat#: 35503)



Immunofluorescence analysis of SMMC-7721 cells using CHRNA3 mouse mAb (green). Blue: DRAQ5 fluorescent DNA dye. Red: Actin filaments have been labeled with Alexa Fluor- 555 phalloidin. Secondary antibody from Fisher (Cat#: 35503)



Flow cytometric analysis of SH-SY5Y cells using CHRNA3 mouse mAb (green) and negative control (red).



Flow cytometric analysis of SK-N-SH cells using CHRNA3 mouse mAb (green) and negative control (red).

Storage

Store at 4°C short term. Aliquot and store at -20°C long term.

501 Changsheng S Rd, Nanhui Dist, Jiaxing, Zhejiang, China

Tel: 86 21 31007137 | E-mail: save@bt-laboratory.com | www.bt-laboratory.com