

## HNF1B Monoclonal Antibody

### Description

<b>Product type</b>	Antibody
<b>Code</b>	BT-MCA4024
<b>Host</b>	Mouse
<b>Isotype</b>	Mouse IgG2a
<b>Size</b>	100µL, 50µL
<b>Immunogen</b>	Purified recombinant fragment of human HNF1B (AA: 23-132) expressed in E. Coli.
<b>Mol wt</b>	61.3kDa
<b>Species reactivity</b>	Human,Mouse,Rat
<b>Clonality</b>	Monoclonal
<b>Recommended application</b>	WB,IHC,ICC,FCM
<b>Concentration</b>	N/A
<b>Full name</b>	N/A
<b>Synonyms</b>	T2D;FJHN;HNF2;LFB3;RCAD;TCF2;HPC11;LF-B3;MODY5;TCF-2;VHNF1;ADTKD3;HNF-1B;HNF1beta;HNF-1-beta

This product is for research use only, not for use in human, therapeutic or diagnostic procedure.

### Background

This gene encodes a member of the homeodomain-containing superfamily of transcription factors. The protein binds to DNA as either a homodimer, or a heterodimer with the related protein hepatocyte nuclear factor 1-alpha. The gene has been shown to function in nephron development, and regulates development of the embryonic pancreas. Mutations in this gene result in renal cysts and diabetes syndrome and noninsulin-dependent diabetes mellitus, and expression of this gene is altered in some types of cancer. Multiple transcript variants encoding different isoforms have been found for this gene.

### Recommended Dilution

WB: 1:500 - 1:2000

IHC-p: 1:200 - 1:1000

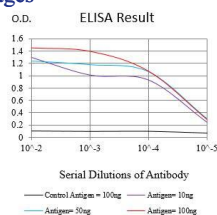
ICC: 1:50 - 1:200

FCM: 1:200 - 1:400

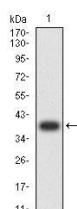
ELISA: 1:10000

Not yet tested in other applications.

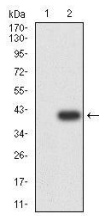
### Images



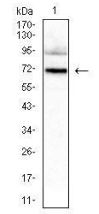
Black line: Control Antigen (100 ng);Purple line: Antigen (10ng); Blue line: Antigen (50 ng); Red line:Antigen (100 ng)



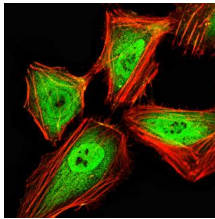
Western blot analysis using HNF1B mAb against human HNF1B (AA: 23-132) recombinant protein. (Expected MW is 38 kDa)



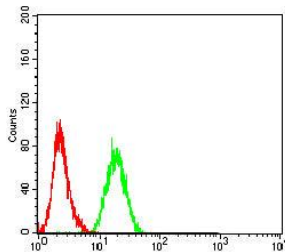
Western blot analysis using HNF1B mAb against HEK293-6e (1) and HNF1B (AA: 23-132)-hIgGFc transfected HEK293-6e (2) cell lysate.



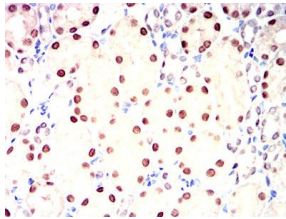
Western blot analysis using HNF1B mouse mAb against HeLa (1) cell lysate.



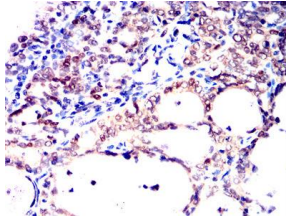
Immunofluorescence analysis of HeLa cells using HNF1B mouse mAb (green). Blue: DRAQ5 fluorescent DNA dye. Red: Actin filaments have been labeled with Alexa Fluor- 555 phalloidin. Secondary antibody from Fisher (Cat#: 35503)



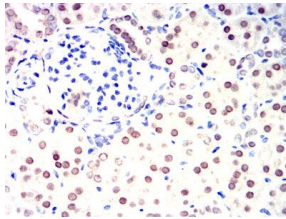
Flow cytometric analysis of PC-3 cells using HNF1B mouse mAb (green) and negative control (red).



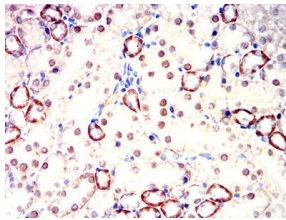
Immunohistochemical analysis of paraffin-embedded rat kidney tissues using HNF1B mouse mAb with DAB staining.



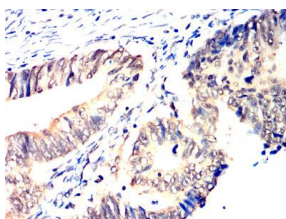
Immunohistochemical analysis of paraffin-embedded cervical cancer tissues using HNF1B mouse mAb with DAB staining.



Immunohistochemical analysis of paraffin-embedded rabbit kidney tissues using HNF1B mouse mAb with DAB staining.



Immunohistochemical analysis of paraffin-embedded mouse kidney tissues using HNF1B mouse mAb with DAB staining.



Immunohistochemical analysis of paraffin-embedded rectum cancer tissues using HNF1B mouse mAb with DAB staining.

## Storage

Store at 4°C short term. Aliquot and store at -20°C long term.

501 Changsheng S Rd, Nanhu Dist, Jiaxing, Zhejiang, China

Tel: 86 21 31007137 | E-mail: [save@bt-laboratory.com](mailto:save@bt-laboratory.com) | [www.bt-laboratory.com](http://www.bt-laboratory.com)