

## UCHL1 Monoclonal Antibody

### Description

<b>Product type</b>	Antibody
<b>Code</b>	BT-MCA4030
<b>Host</b>	Mouse
<b>Isotype</b>	Mouse IgG2b
<b>Size</b>	100µL, 50µL
<b>Immunogen</b>	Purified recombinant fragment of human UCHL1 (AA: 1-220) expressed in E. Coli.
<b>Mol wt</b>	24.8kDa
<b>Species reactivity</b>	Human,Mouse,Rat
<b>Clonality</b>	Monoclonal
<b>Recommended application</b>	WB,IHC,ICC,FCM
<b>Concentration</b>	N/A
<b>Full name</b>	N/A
<b>Synonyms</b>	NDGOA;PARK5;PGP95;SPG79;PGP9.5;Uch-L1;HEL-117;PGP 9.5;HEL-S-53

This product is for research use only, not for use in human, therapeutic or diagnostic procedure.

### Background

The protein encoded by this gene belongs to the peptidase C12 family. This enzyme is a thiol protease that hydrolyzes a peptide bond at the C-terminal glycine of ubiquitin. This gene is specifically expressed in the neurons and in cells of the diffuse neuroendocrine system. Mutations in this gene may be associated with Parkinson disease.

### Recommended Dilution

WB: 1:500 - 1:2000

IHC-p: 1:200 - 1:1000

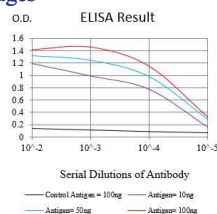
ICC: 1:50 - 1:200

FCM: 1:200 - 1:400

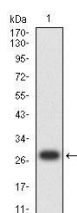
ELISA: 1:10000

Not yet tested in other applications.

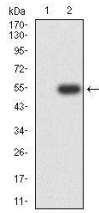
### Images



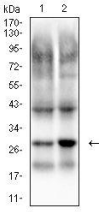
Black line: Control Antigen (100 ng);Purple line: Antigen (10ng); Blue line: Antigen (50 ng); Red line:Antigen (100 ng)



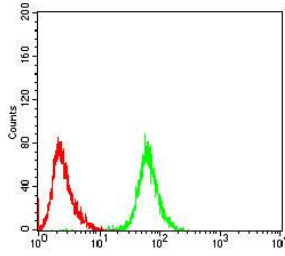
Western blot analysis using UCHL1 mAb against human UCHL1 (AA: 1-220) recombinant protein. (Expected MW is 27.5 kDa)



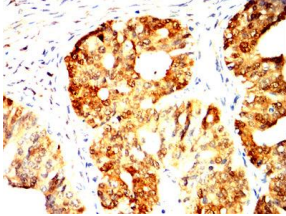
Western blot analysis using UCHL1 mAb against HEK293-6e (1) and UCHL1 (AA: 1-220)-hlgGFc transfected HEK293-6e (2) cell lysate.



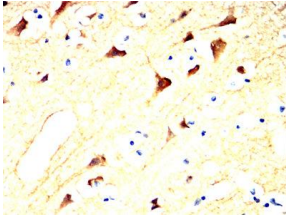
Western blot analysis using UCHL1 mouse mAb against mouse brain (1), and rat brain (2) cell lysate.



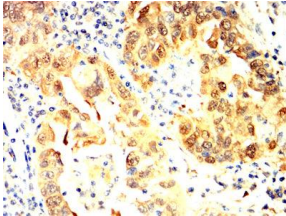
Flow cytometric analysis of Hek293 cells using UCHL1 mouse mAb (green) and negative control (red).



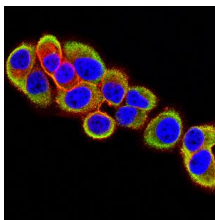
Immunohistochemical analysis of paraffin-embedded ovarian cancer tissues using UCHL1 mouse mAb with DAB staining.



Immunohistochemical analysis of paraffin-embedded brain tissues using UCHL1 mouse mAb with DAB staining.



Immunohistochemical analysis of paraffin-embedded endometrial cancer tissues using UCHL1 mouse mAb with DAB staining.



Immunofluorescence analysis of Hela cells using UCHL1 mouse mAb (green). Blue: DRAQ5 fluorescent DNA dye. Red: Actin filaments have been labeled with Alexa Fluor- 555 phalloidin. Secondary antibody from Fisher (Cat#: 35503)

## Storage

Store at 4°C short term. Aliquot and store at -20°C long term.

501 Changsheng S Rd, Nanhu Dist, Jiaxing, Zhejiang, China

Tel: 86 21 31007137 | E-mail: [save@bt-laboratory.com](mailto:save@bt-laboratory.com) | [www.bt-laboratory.com](http://www.bt-laboratory.com)