

BTN1A1 Monoclonal Antibody

Description

Product type	Antibody
Code	BT-MCA4056
Host	Mouse
Isotype	Mouse IgG2b
Size	100µL, 50µL
Immunogen	Purified recombinant fragment of human BTN1A1 (AA: extra 27-242) expressed in E. Coli.
Mol wt	58.9kDa
Species reactivity	Human,Mouse,Rat
Clonality	Monoclonal
Recommended application	WB,FCM
Concentration	N/A
Full name	N/A
Synonyms	BT;BTN;BTN1

This product is for research use only, not for use in human, therapeutic or diagnostic procedure.

Background

Butyrophilin is the major protein associated with fat droplets in the milk. It is a member of the immunoglobulin superfamily. It may have a cell surface receptor function. The human butyrophilin gene is localized in the major histocompatibility complex (MHC) class I region of 6p and may have arisen relatively recently in evolution by the shuffling of exons between 2 ancestral gene families

Recommended Dilution

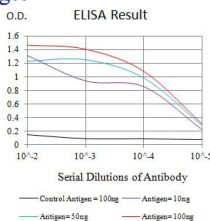
WB: 1:500 - 1:2000

FCM: 1:200 - 1:400

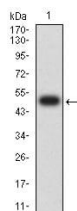
ELISA: 1:10000

Not yet tested in other applications.

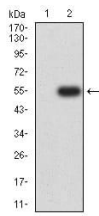
Images



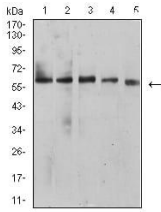
Black line: Control Antigen (100 ng);Purple line: Antigen (10ng); Blue line: Antigen (50 ng); Red line:Antigen (100 ng)



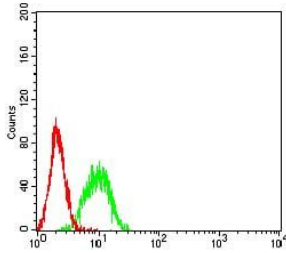
Western blot analysis using BTN1A1 mAb against human BTN1A1 (AA: extra 27-242) recombinant protein. (Expected MW is 50 kDa)



Western blot analysis using BTN1A1 mAb against HEK293 (1) and BTN1A1 (AA: extra 27-242)-hlgGFc transfected HEK293 (2) cell lysate.



Western blot analysis using BTN1A1 mouse mAb against HepG2 (1), MCF-7 (2), SK-BR-3 (3), NIH/3T3 (4), and C6 (5) cell lysate.



Flow cytometric analysis of K562 cells using BTN1A1 mouse mAb (green) and negative control (red).

Storage

Store at 4°C short term. Aliquot and store at -20°C long term.

501 Changsheng S Rd, Nanhu Dist, Jiaxing, Zhejiang, China

Tel: 86 21 31007137 | E-mail: save@bt-laboratory.com | www.bt-laboratory.com