

CD1A Monoclonal Antibody

Description

Product type	Antibody
Code	BT-MCA4057
Host	Mouse
Isotype	Mouse IgG1
Size	100µL, 50µL
Immunogen	Purified recombinant fragment of human CD1A (AA: 17-116) expressed in E. Coli.
Mol wt	37kDa
Species reactivity	Others
Clonality	Monoclonal
Recommended application	IHC;FCM
Concentration	N/A
Full name	N/A
Synonyms	R4;T6;CD1;FCB6;HTA1

This product is for research use only, not for use in human, therapeutic or diagnostic procedure.

Background

This gene encodes a member of the CD1 family of transmembrane glycoproteins, which are structurally related to the major histocompatibility complex (MHC) proteins and form heterodimers with beta-2-microglobulin. The CD1 proteins mediate the presentation of primarily lipid and glycolipid antigens of self or microbial origin to T cells. The human genome contains five CD1 family genes organized in a cluster on chromosome 1. The CD1 family members are thought to differ in their cellular localization and specificity for particular lipid ligands. The protein encoded by this gene localizes to the plasma membrane and to recycling vesicles of the early endocytic system. Alternative splicing results in multiple transcript variants. [provided by RefSeq, Mar 2016]

Recommended Dilution

WB: 1:500 - 1:2000

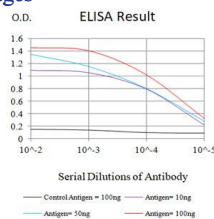
IHC-p: 1:200 - 1:1000

FCM: 1:200 - 1:400

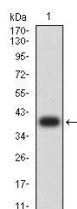
ELISA: 1:10000

Not yet tested in other applications.

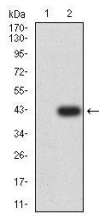
Images



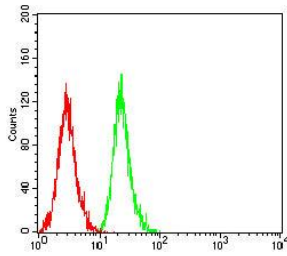
Black line: Control Antigen (100 ng);Purple line: Antigen (10ng); Blue line: Antigen (50 ng); Red line:Antigen (100 ng)



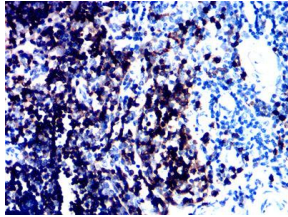
Western blot analysis using CD1A mAb against human CD1A (AA: 17-116) recombinant protein. (Expected MW is 39.7 kDa)



Western blot analysis using CD1A mAb against HEK293-6e (1) and CD1A (AA: 17-116)-hlgGFc transfected HEK293-6e (2) cell lysate.



Flow cytometric analysis of MOLT4 cells using CD1A mouse mAb (green) and negative control (red).



Immunohistochemical analysis of paraffin-embedded thymus tissues using CD1A mouse mAb with DAB staining.

Storage

Store at 4°C short term. Aliquot and store at -20°C long term.

501 Changsheng S Rd, Nanhu Dist, Jiaxing, Zhejiang, China

Tel: 86 21 31007137 | E-mail: save@bt-laboratory.com | www.bt-laboratory.com