

CDKN1C Monoclonal Antibody

Description

Product type	Antibody
Code	BT-MCA4062
Host	Mouse
Isotype	Mouse IgG1
Size	100μL, 50μL
Immunogen	Purified recombinant fragment of human CDKN1C expressed in E. Coli.
Mol wt	32.2kDa
Species reactivity	Others
Clonality	Monoclonal
Recommended application	WB,IHC,ICC,FCM
Concentration	N/A
Full name	N/A
Synonyms	BWS;WBS;p57;BWCR;KIP2;p57Kip2

This product is for research use only, not for use in human, therapeutic or diagnostic procedure.

Background

This gene is imprinted, with preferential expression of the maternal allele. The encoded protein is a tight-binding, strong inhibitor of several G1 cyclin/Cdk complexes and a negative regulator of cell proliferation. Mutations in this gene are implicated in sporadic cancers and Beckwith-Wiedemann syndrome, suggesting that this gene is a tumor suppressor candidate. Three transcript variants encoding two different isoforms have been found for this gene.

Recommended Dilution

WB: 1:500 - 1:2000

IHC-p: 1:200-1:1000

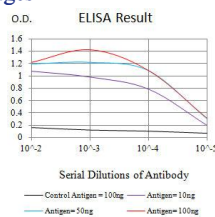
ICC: 1:200 - 1:1000

FCM: 1:200-1:400

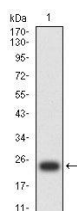
ELISA: 1:10000

Not yet tested in other applications.

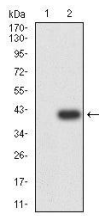
Images



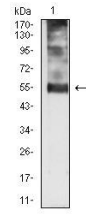
Black line: Control Antigen (100 ng);Purple line: Antigen (10ng); Blue line: Antigen (50 ng); Red line: Antigen (100 ng)



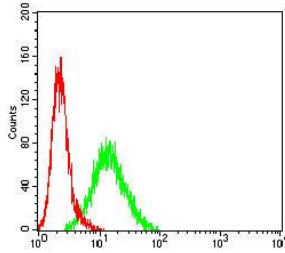
Western blot analysis using CDKN1C mAb against human CDKN1C recombinant protein. (Expected MW is 23.3 kDa)



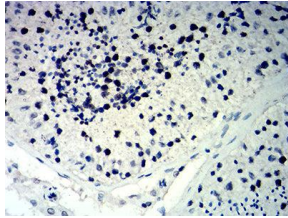
Western blot analysis using CDKN1C mAb against HEK293-6e (1) and CDKN1C-hIgGFc transfected HEK293-6e (2) cell lysate.



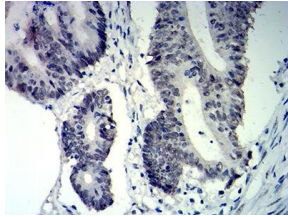
Western blot analysis using CDKN1C mouse mAb against SK-Br-3 (1) cell lysate.



Flow cytometric analysis of MCF-7 cells using CDKN1C mouse mAb (green) and negative control (red).



Immunohistochemical analysis of paraffin-embedded testis tissues using CDKN1C mouse mAb with DAB staining.



Immunohistochemical analysis of paraffin-embedded colon cancer tissues using CDKN1C mouse mAb with DAB staining.

Storage

Store at 4°C short term. Aliquot and store at -20°C long term.

501 Changsheng S Rd, Nanhu Dist, Jiaxing, Zhejiang, China

Tel: 86 21 31007137 | E-mail: save@bt-laboratory.com | www.bt-laboratory.com