

MPS1 Monoclonal Antibody

Description

Product type	Antibody
Code	BT-MCA4069
Host	Mouse
Isotype	Mouse IgG1
Size	100µL, 50µL
Immunogen	Purified recombinant fragment of MPS1 expressed in E. Coli.
Mol wt	9.5kDa
Species reactivity	Human
Clonality	Monoclonal
Recommended application	ICC
Concentration	N/A
Full name	N/A
Synonyms	RPS27

This product is for research use only, not for use in human, therapeutic or diagnostic procedure.

Background

MPS1, also known as RPS27. It is a ribosomal protein. Ribosomes, the organelles that catalyze protein synthesis, consist of a small 40S subunit and a large 60S subunit. Together these subunits are composed of 4 RNA species and approximately 80 structurally distinct proteins. MPS1 is a component of the 40S subunit. The protein belongs to the S27E family of ribosomal proteins. It contains a C4-type zinc finger domain that can bind to zinc. The encoded protein has been shown to be able to bind to nucleic acid. It is located in the cytoplasm as a ribosomal component, but it has also been detected in the nucleus. Studies in rat indicate that ribosomal protein S27 is located near ribosomal protein S18 in the 40S subunit and is covalently linked to translation initiation factor eIF3. As is typical for genes encoding ribosomal proteins, there are multiple processed pseudogenes of this gene dispersed through the genome.

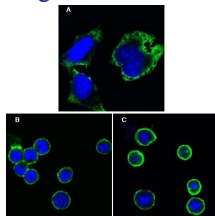
Recommended Dilution

ICC: 1:200 - 1:1000

ELISA: 1:10000

Not yet tested in other applications.

Images



Confocal Immunofluorescence analysis of HeLa cells (A), BCBL-1 cells (B) and L1210 cells (C) using MPS1 mouse mAb (green). Blue: DRAQ5 fluorescent DNA dye.

Storage

Store at 4°C short term. Aliquot and store at -20°C long term.