

KSHV K8a Monoclonal Antibody

Description

Product type	Antibody
Code	BT-MCA4075
Host	Mouse
Isotype	Mouse IgG2a
Size	100 μ L, 50 μ L
Immunogen	Purified recombinant fragment of KSHV K8 α expressed in E. Coli.
Mol wt	N/A
Species reactivity	Others
Clonality	Monoclonal
Recommended application	IHC
Concentration	N/A
Full name	N/A
Synonyms	K8

This product is for research use only, not for use in human, therapeutic or diagnostic procedure.

Background

Kaposi's sarcoma-associated herpesvirus (KSHV) belongs to the gamma-(2)-herpesvirus subfamily and has been closely linked to the Kaposi

Recommended Dilution

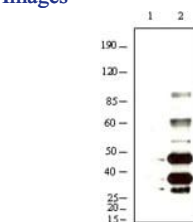
WB: 1:500 - 1:2000

IHC-p: 1:200 - 1:1000

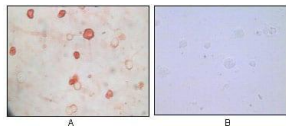
ELISA: 1:10000

Not yet tested in other applications.

Images



Western blot analysis using KSHV K8a mouse mAb against BCBL-1 (1) and TPA induced BCBL-1 (2) cell lysate.



Immunocytochemistry analysis of TPA induced BCBL-1 cells (A) and uninduced BCBL-1 cells (B) using KSHV K8a mouse mAb with AEC staining.

Storage

Store at 4 $^{\circ}$ C short term. Aliquot and store at -20 $^{\circ}$ C long term.