

FCER1A Monoclonal Antibody

Description

Product type	Antibody
Code	BT-MCA4088
Host	Mouse
Isotype	Mouse IgG1
Size	100µL, 50µL
Immunogen	Purified recombinant fragment of human FCER1A (AA:42-103) expressed in E. Coli.
Mol wt	29.6kDa
Species reactivity	Human,Mouse
Clonality	Monoclonal
Recommended application	WB,FCM
Concentration	N/A
Full name	N/A
Synonyms	FCE1A;FcERI

This product is for research use only, not for use in human, therapeutic or diagnostic procedure.

Background

N/A

Recommended Dilution

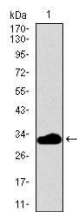
WB: 1:500 - 1:2000

FCM: 1:200 - 1:400

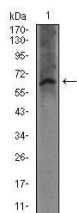
ELISA: 1:10000

Not yet tested in other applications.

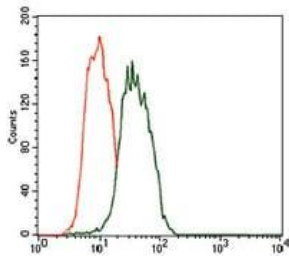
Images



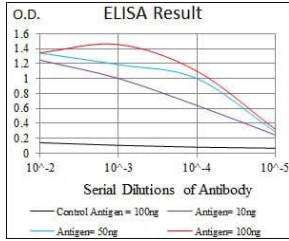
Western blot analysis using FCER1A mAb against human FCER1A recombinant protein. (Expected MW is 32.5 kDa)



Western blot analysis using FCER1A mouse mAb against mouse kidney tissue lysate.



Flow cytometric analysis of HEK293 cells using FCER1A mouse mAb (green) and negative control (red).



Black line: Control Antigen (100 ng); Purple line: Antigen(10ng); Blue line: Antigen (50 ng); Red line: Antigen (100 ng);

Storage

Store at 4°C short term. Aliquot and store at -20°C long term.

501 Changsheng S Rd, Nanhu Dist, Jiaxing, Zhejiang, China

Tel: 86 21 31007137 | E-mail: save@bt-laboratory.com | www.bt-laboratory.com