

## SETD7 Monoclonal Antibody

### Description

<b>Product type</b>	Antibody
<b>Code</b>	BT-MCA4089
<b>Host</b>	Mouse
<b>Isotype</b>	Mouse IgG1
<b>Size</b>	100µL, 50µL
<b>Immunogen</b>	Purified recombinant fragment of human SETD7 (AA: 107-366) expressed in E. Coli.
<b>Mol wt</b>	40.7kDa
<b>Species reactivity</b>	Human,Rat,Monkey
<b>Clonality</b>	Monoclonal
<b>Recommended application</b>	WB,IHC
<b>Concentration</b>	N/A
<b>Full name</b>	N/A
<b>Synonyms</b>	KMT7;SET7;SET9;SET7/9

This product is for research use only, not for use in human, therapeutic or diagnostic procedure.

### Background

Histone methyltransferase that specifically monomethylates Lys-4 of histone H3. H3 Lys-4 methylation represents a specific tag for epigenetic transcriptional activation. Plays a central role in the transcriptional activation of genes such as collagenase or insulin. Recruited by IPF1/PDX-1 to the insulin promoter, leading to activate transcription. Has also methyltransferase activity toward non-histone proteins such as p53/TP53, TAF10, and possibly TAF7 by recognizing and binding the [KR]-[STA]-K in substrate proteins. Monomethylates Lys-189 of TAF10, leading to increase the affinity of TAF10 for RNA polymerase II. Monomethylates Lys-372 of p53/TP53, stabilizing p53/TP53 and increasing p53/TP53-mediated transcriptional activation.

### Recommended Dilution

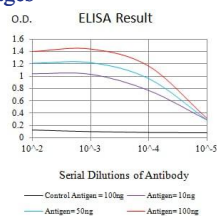
WB: 1:500 - 1:2000

IHC-p: 1:200 - 1:1000

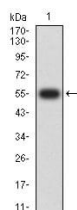
ELISA: 1:10000

Not yet tested in other applications.

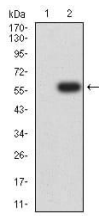
### Images



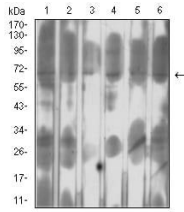
Black line: Control Antigen (100 ng);Purple line: Antigen (10ng); Blue line: Antigen (50 ng); Red line:Antigen (100 ng)



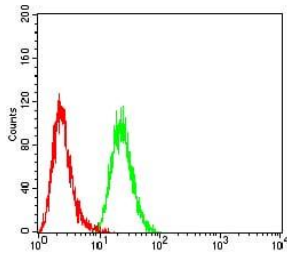
Western blot analysis using SETD7 mAb against human SETD7 (AA: 107-366) recombinant protein. (Expected MW is 55 kDa)



Western blot analysis using SETD7 mAb against HEK293 (1) and SETD7 (AA: 107-366)-hlgGFc transfected HEK293 (2) cell lysate.



Western blot analysis using SETD7 mouse mAb against MCF-7 (1), HeLa (2), A549 (3), COS7 (4), Jurkat (5), and PC-12 (6) cell lysate.



Immunohistochemical analysis of paraffin-embedded HeLa tissues using SETD7 mouse mAb with DAB staining.

### Storage

Store at 4°C short term. Aliquot and store at -20°C long term.

501 Changsheng S Rd, Nanhu Dist, Jiaxing, Zhejiang, China

Tel: 86 21 31007137 | E-mail: [save@bt-laboratory.com](mailto:save@bt-laboratory.com) | [www.bt-laboratory.com](http://www.bt-laboratory.com)