

NR1H2 Monoclonal Antibody

Description

Product type	Antibody
Code	BT-MCA4113
Host	Mouse
Isotype	Mouse IgG2b
Size	100µL, 50µL
Immunogen	Purified recombinant fragment of human NR1H2 (AA:1-200) expressed in E. Coli.
Mol wt	51kDa
Species reactivity	Others
Clonality	Monoclonal
Recommended application	ICC,FCM
Concentration	N/A
Full name	N/A
Synonyms	NER;UNR;LXRB;LXR-b;NER-I;RIP15

This product is for research use only, not for use in human, therapeutic or diagnostic procedure.

Background

The liver X receptors, LXRA (NR1H3; MIM 602423) and LXRB, form a subfamily of the nuclear receptor superfamily and are key regulators of macrophage function, controlling transcriptional programs involved in lipid homeostasis and inflammation. The inducible LXRA is highly expressed in liver, adrenal gland, intestine, adipose tissue, macrophages, lung, and kidney, whereas LXRB is ubiquitously expressed. Ligand-activated LXRs form obligate heterodimers with retinoid X receptors (RXRs; see MIM 180245) and regulate expression of target genes containing LXR response elements (summary by Korf et al., 2009 [PubMed 19436111]).

Recommended Dilution

WB: 1:500 - 1:2000

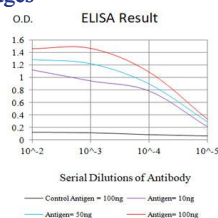
ICC: 1:200 - 1:1000

FCM: 1:200 - 1:400

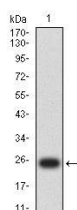
ELISA: 1:10000

Not yet tested in other applications.

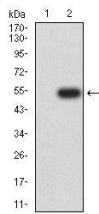
Images



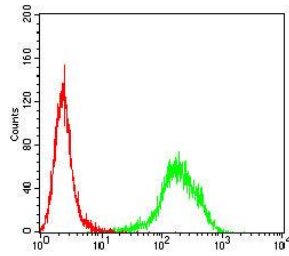
Black line: Control Antigen (100 ng);Purple line: Antigen (10ng); Blue line: Antigen (50 ng); Red line:Antigen (100 ng)



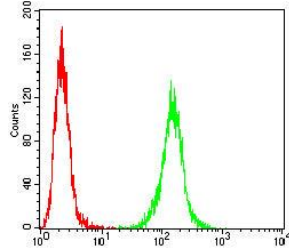
Western blot analysis using NR1H2 mAb against human NR1H2 (AA:1-200) recombinant protein. (Expected MW is 24.4 kDa)



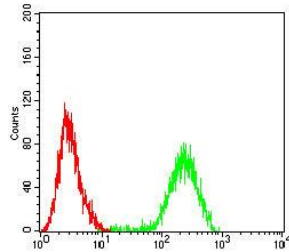
Western blot analysis using NR1H2 mAb against HEK293-6e (1) and human NR1H2 (AA:1-200)-hlgGFc transfected HEK293-6e (2) cell lysate.



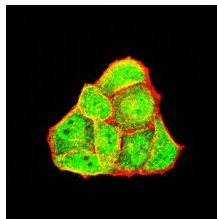
Flow cytometric analysis of A375 cells using NR1H2 mouse mAb (green) and negative control (red).



Flow cytometric analysis of HeLa cells using NR1H2 mouse mAb (green) and negative control (red).



Flow cytometric analysis of Raji cells using NR1H2 mouse mAb (green) and negative control (red).



Immunofluorescence analysis of HeLa cells using NR1H2 mouse mAb (green). Blue: DRAQ5 fluorescent DNA dye. Red: Actin filaments have been labeled with Alexa Fluor- 555 phalloidin. Secondary antibody from Fisher (Cat#: 35503)

Storage

Store at 4°C short term. Aliquot and store at -20°C long term.

501 Changsheng S Rd, Nanhu Dist, Jiaxing, Zhejiang, China

Tel: 86 21 31007137 | E-mail: save@bt-laboratory.com | www.bt-laboratory.com