

KITLG Monoclonal Antibody

Description

| | |
|--------------------------------|---|
| Product type | Antibody |
| Code | BT-MCA4115 |
| Host | Mouse |
| Isotype | Mouse IgG2b |
| Size | 100µL, 50µL |
| Immunogen | Purified recombinant fragment of human KITLG (AA:Extra(26-214)) expressed in Mammalian. |
| Mol wt | 30.9kDa |
| Species reactivity | Others |
| Clonality | Monoclonal |
| Recommended application | IHC,ICC,FCM |
| Concentration | N/A |
| Full name | N/A |
| Synonyms | SF;MGF;SCF;SLF;DCUA;FPH2;FPHH;KL-1;Kitl;SHEP7;DFNA69 |

This product is for research use only, not for use in human, therapeutic or diagnostic procedure.

Background

This gene encodes the ligand of the tyrosine-kinase receptor encoded by the KIT locus. This ligand is a pleiotropic factor that acts in utero in germ cell and neural cell development, and hematopoiesis, all believed to reflect a role in cell migration. In adults, it functions pleiotropically, while mostly noted for its continued requirement in hematopoiesis. Two transcript variants encoding different isoforms have been found for this gene. [provided by RefSeq, Jul 2008]

Recommended Dilution

WB: 1:500 - 1:2000

IHC-p: 1:200 - 1:1000

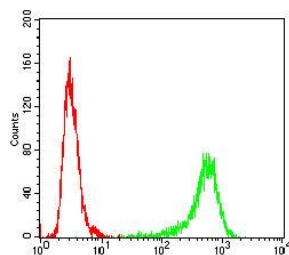
ICC: 1:200 - 1:1000

FCM: 1:200 - 1:400

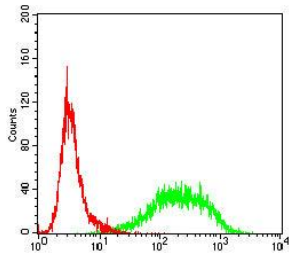
ELISA: 1:10000

Not yet tested in other applications.

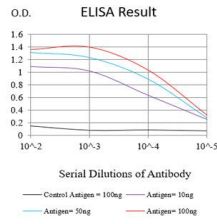
Images



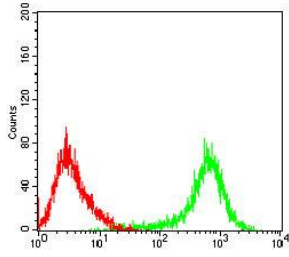
Flow cytometric analysis of HeLa cells using KITLG mouse mAb (green) and negative control (red).



Flow cytometric analysis of Jurkat cells using KITLG mouse mAb (green) and negative control (red).



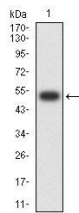
Black line: Control Antigen (100 ng);Purple line: Antigen (10ng); Blue line: Antigen (50 ng); Red line:Antigen (100 ng)



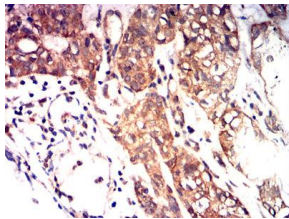
Flow cytometric analysis of Raji cells using KITLG mouse mAb (green) and negative control (red).



Immunofluorescence analysis of HeLa cells using KITLG mouse mAb (green). Blue: DRAQ5 fluorescent DNA dye. Red: Actin filaments have been labeled with Alexa Fluor- 555 phalloidin. Secondary antibody from Fisher (Cat#: 35503)



Western blot analysis using KITLG mAb against human KITLG (AA: Extra(26-214)) recombinant protein. (Expected MW is 52 kDa)



Immunohistochemical analysis of paraffin-embedded Bladder cancer tissues using KITLG mouse mAb with DAB staining.

Storage

Store at 4°C short term. Aliquot and store at -20°C long term.

501 Changsheng S Rd, Nanhu Dist, Jiaxing, Zhejiang, China

Tel: 86 21 31007137 | E-mail: save@bt-laboratory.com | www.bt-laboratory.com