

CD226 Monoclonal Antibody

Description

Product type	Antibody
Code	BT-MCA4116
Host	Mouse
Isotype	Mouse IgG1
Size	100µL, 50µL
Immunogen	Purified recombinant fragment of human CD226 (AA: extra 19-254) expressed in E. Coli.
Mol wt	38.6kDa
Species reactivity	Others
Clonality	Monoclonal
Recommended application	IHC,FCM
Concentration	N/A
Full name	N/A
Synonyms	PTA1;DNAM1;DNAM-1;TLISA1

This product is for research use only, not for use in human, therapeutic or diagnostic procedure.

Background

This gene encodes a glycoprotein expressed on the surface of NK cells, platelets, monocytes and a subset of T cells. It is a member of the Ig-superfamily containing 2 Ig-like domains of the V-set. The protein mediates cellular adhesion of platelets and megakaryocytic cells to vascular endothelial cells. The protein also plays a role in megakaryocytic cell maturation. Alternative splicing results in multiple transcript variants.

Recommended Dilution

WB: 1:500 - 1:2000

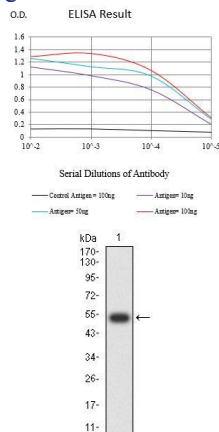
IHC-p: 1:200 - 1:1000

FCM: 1:200 - 1:400

ELISA: 1:10000

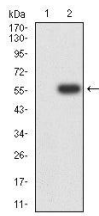
Not yet tested in other applications.

Images

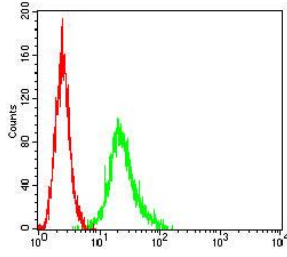


Black line: Control Antigen (100 ng);Purple line: Antigen (10ng); Blue line: Antigen (50 ng); Red line:Antigen (100 ng)

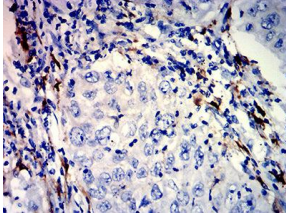
Western blot analysis using CD226 mAb against human CD226 (AA: extra 19-254) recombinant protein. (Expected MW is 52.7 kDa)



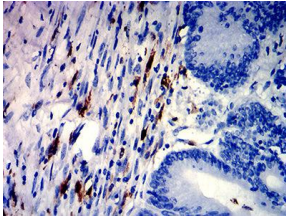
Western blot analysis using CD226 mAb against HEK293-6e (1) and CD226 (AA: extra 19-254)-hlgGFc transfected HEK293-6e (2) cell lysate.



Flow cytometric analysis of THP-1 cells using CD226 mouse mAb (green) and negative control (red).



Immunohistochemical analysis of paraffin-embedded lung cancer tissues using CD226 mouse mAb with DAB staining.



Immunohistochemical analysis of paraffin-embedded colon cancer tissues using CD226 mouse mAb with DAB staining.

Storage

Store at 4°C short term. Aliquot and store at -20°C long term.

501 Changsheng S Rd, Nanhu Dist, Jiaxing, Zhejiang, China

Tel: 86 21 31007137 | E-mail: save@bt-laboratory.com | www.bt-laboratory.com