

CCND1 Monoclonal Antibody

Description

Product type	Antibody
Code	BT-MCA4123
Host	Mouse
Isotype	Mouse IgG1
Size	100μL, 50μL
Immunogen	Purified recombinant fragment of human CCND1 (AA: 1-295) expressed in E. Coli.
Mol wt	33.7kDa
Species reactivity	Others
Clonality	Monoclonal
Recommended application	WB,IHC,FCM
Concentration	N/A
Full name	N/A
Synonyms	BCL1;PRAD1;U21B31;D11S287E

This product is for research use only, not for use in human, therapeutic or diagnostic procedure.

Background

The protein encoded by this gene belongs to the highly conserved cyclin family, whose members are characterized by a dramatic periodicity in protein abundance throughout the cell cycle. Cyclins function as regulators of CDK kinases. Different cyclins exhibit distinct expression and degradation patterns which contribute to the temporal coordination of each mitotic event. This cyclin forms a complex with and functions as a regulatory subunit of CDK4 or CDK6, whose activity is required for cell cycle G1/S transition. This protein has been shown to interact with tumor suppressor protein Rb and the expression of this gene is regulated positively by Rb. Mutations, amplification and overexpression of this gene, which alters cell cycle progression, are observed frequently in a variety of human cancers.

Recommended Dilution

WB: 1:500 - 1:2000

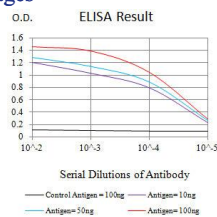
IHC-p: 1:200-1:1000

FCM: 1:200-1:400

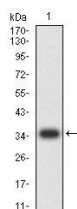
ELISA: 1:10000

Not yet tested in other applications.

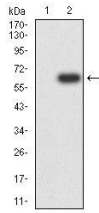
Images



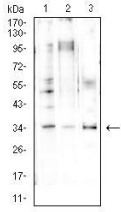
Black line: Control Antigen (100 ng);Purple line: Antigen (10ng); Blue line: Antigen (50 ng); Red line: Antigen (100 ng)



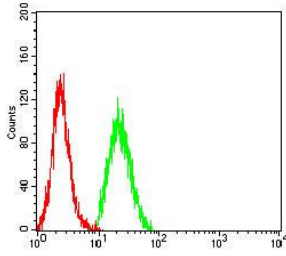
Western blot analysis using CCND1 mAb against human CCND1 (AA: 1-295) recombinant protein. (Expected MW is 36.6 kDa)



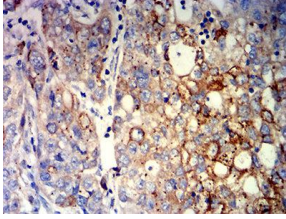
Western blot analysis using CCND1 mAb against HEK293-6e (1) and CCND1 (AA: 1-295)-hlgGfc transfected HEK293 (2) cell lysate.



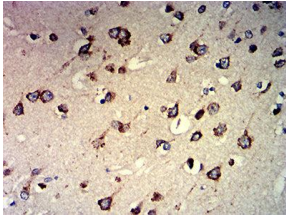
Western blot analysis using CCND1 mouse mAb against LNCAP (1), A431 (2), and NIH/3T3 (3) cell lysate.



Flow cytometric analysis of HeLa cells using CCND1 mouse mAb (green) and negative control (red).



Immunohistochemical analysis of paraffin-embedded liver cancer tissues using CCND1 mouse mAb with DAB staining.



Immunohistochemical analysis of paraffin-embedded brain tissues using CCND1 mouse mAb with DAB staining.

Storage

Store at 4°C short term. Aliquot and store at -20°C long term.

501 Changsheng S Rd, Nanhu Dist, Jiaxing, Zhejiang, China

Tel: 86 21 31007137 | E-mail: save@bt-laboratory.com | www.bt-laboratory.com