

ARG1 Monoclonal Antibody

Description

Product type	Antibody
Code	BT-MCA4127
Host	Mouse
Isotype	Mouse IgG1
Size	100µL, 50µL
Immunogen	Purified recombinant fragment of human ARG1 (AA: (1-322)) expressed in E. Coli.
Mol wt	34.7kDa
Species reactivity	Others
Clonality	Monoclonal
Recommended application	IHC
Concentration	N/A
Full name	N/A
Synonyms	ARG1

This product is for research use only, not for use in human, therapeutic or diagnostic procedure.

Background

Arginase catalyzes the hydrolysis of arginine to ornithine and urea. At least two isoforms of mammalian arginase exist (types I and II) which differ in their tissue distribution, subcellular localization, immunologic crossreactivity and physiologic function. The type I isoform encoded by this gene, is a cytosolic enzyme and expressed predominantly in the liver as a component of the urea cycle. Inherited deficiency of this enzyme results in argininemia, an autosomal recessive disorder characterized by hyperammonemia. Two transcript variants encoding different isoforms have been found for this gene. [provided by RefSeq, Sep 2011]

Recommended Dilution

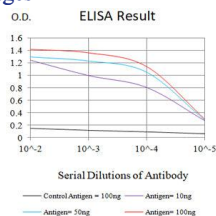
WB: 1:500 - 1:2000

IHC-p: 1:200-1:1000

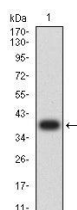
ELISA: 1:10000

Not yet tested in other applications.

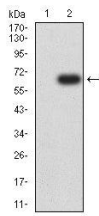
Images



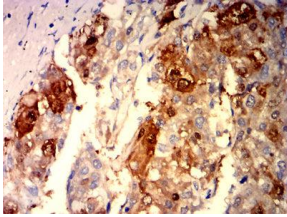
Black line: Control Antigen (100 ng); Purple line: Antigen (10ng); Blue line: Antigen (50 ng); Red line: Antigen (100 ng)



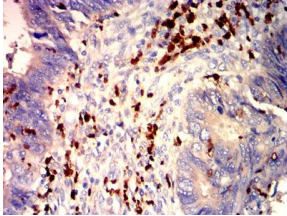
Western blot analysis using ARG1 mAb against human ARG1 (AA: (1-322)) recombinant protein. (Expected MW is 38.6 kDa)



Western blot analysis using ARG1 mAb against HEK293-6e (1) and ARG1 (AA: (1-322))-hIgGFc transfected HEK293-6e (2) cell lysate.



Immunohistochemical analysis of paraffin-embedded liver cancer tissues using ARG1 mouse mAb with DAB staining.



Immunohistochemical analysis of paraffin-embedded rectal cancer tissues using ARG1 mouse mAb with DAB staining.

Storage

Store at 4°C short term. Aliquot and store at -20°C long term.

501 Changsheng S Rd, Nanhu Dist, Jiaxing, Zhejiang, China

Tel: 86 21 31007137 | E-mail: save@bt-laboratory.com | www.bt-laboratory.com