

## R-spondin1 Monoclonal Antibody

### Description

<b>Product type</b>	Antibody
<b>Code</b>	BT-MCA4135
<b>Host</b>	Mouse
<b>Isotype</b>	Mouse IgG1
<b>Size</b>	100 $\mu$ L, 50 $\mu$ L
<b>Immunogen</b>	Purified recombinant fragment of R-spondin1 expressed in E. Coli.
<b>Mol wt</b>	28.9kDa
<b>Species reactivity</b>	Human
<b>Clonality</b>	Monoclonal
<b>Recommended application</b>	Others
<b>Concentration</b>	N/A
<b>Full name</b>	N/A
<b>Synonyms</b>	RSPO1;CRISTIN3;FLJ40906

This product is for research use only, not for use in human, therapeutic or diagnostic procedure.

### Background

R-spondin1, also known as RSPO1, CRISTIN3, FLJ40906. Entrez Protein NP\_001033722.1. It is a member of the R-spondin family and a 28.9kDa secreted activator protein with two cystein-rich, furin-like domains and one thrombospondin type 1 domain. In mice, the protein induces the rapid onset of crypt cell proliferation and increases intestinal epithelial healing, providing a protective effect against chemotherapy-induced adverse effects. It is activator of the beta-catenin signaling cascade, leading to TCF-dependent gene activation. Acts both in the canonical Wnt/beta-catenin-dependent pathway, possibly via a direct interaction with Wnt proteins, and in a Wnt-independent beta catenin pathway through a receptor signaling pathway that may not use frizzled/LRP receptors. Acts as a ligand for frizzled FZD8 and LRP6. May negatively regulate the TGF-beta pathway. Has a essential roles in ovary determination.

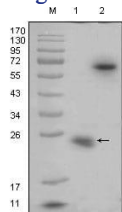
### Recommended Dilution

WB: 1:500 - 1:2000

ELISA: 1:10000

Not yet tested in other applications.

### Images



Western blot analysis using R-spondin1 mouse mAb against recombinant R-spondin1 protein (1) and R-spondin1(aa21-263)-hlgGfc transfected HEK293 cell lysate(2).

### Storage

Store at 4°C short term. Aliquot and store at -20°C long term.