

## CD22 Monoclonal Antibody

### Description

<b>Product type</b>	Antibody
<b>Code</b>	BT-MCA4150
<b>Host</b>	Mouse
<b>Isotype</b>	Mouse IgG1
<b>Size</b>	100µL, 50µL
<b>Immunogen</b>	Purified recombinant fragment of human CD22 (AA: 621-725) expressed in E. Coli.
<b>Mol wt</b>	95.3kDa
<b>Species reactivity</b>	Human
<b>Clonality</b>	Monoclonal
<b>Recommended application</b>	WB,IHC,ICC,FCM
<b>Concentration</b>	N/A
<b>Full name</b>	N/A
<b>Synonyms</b>	SIGLEC2;SIGLEC-2

This product is for research use only, not for use in human, therapeutic or diagnostic procedure.

### Background

N/A

### Recommended Dilution

WB: 1:500 - 1:2000

IHC-p: 1:200 - 1:1000

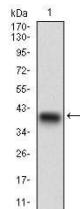
ICC: 1:50 - 1:200

FCM: 1:200 - 1:400

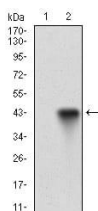
ELISA: 1:10000

Not yet tested in other applications.

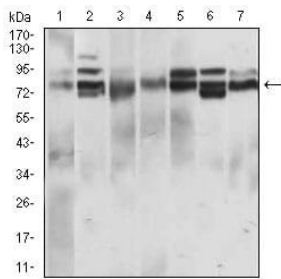
### Images



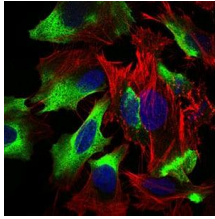
Western blot analysis using CD22 mAb against human CD22 recombinant protein. (Expected MW is 37 kDa)



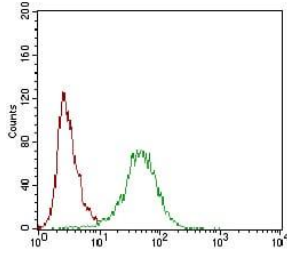
Western blot analysis using CD22 mAb against HEK293 (1) and CD22 (AA: 621-725)-hIgGFc transfected HEK293 (2) cell lysate.



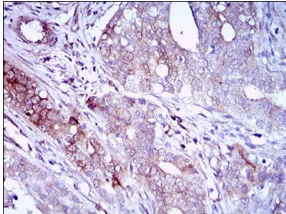
Western blot analysis using CD22 mouse mAb against L1210 (1), HeLa (2), HEK293 (3), Jurkat (4), OCM-1 (5), A432 (6) and NIH/3T3 (7) cell lysate.



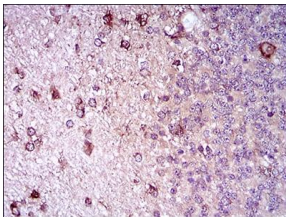
Immunofluorescence analysis of HeLa cells using CD22 mouse mAb (green). Blue: DRAQ5 fluorescent DNA dye. Red: Actin filaments have been labeled with Alexa Fluor-555 phalloidin.



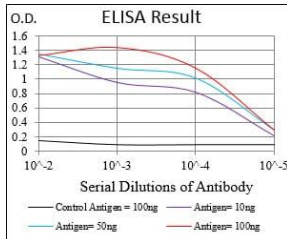
Flow cytometric analysis of HeLa cells using CD22 mouse mAb (green) and negative control (red).



Immunohistochemical analysis of paraffin-embedded cervical cancer tissues using CD22 mouse mAb with DAB staining.



Immunohistochemical analysis of paraffin-embedded cerebellum tissues using CD22 mouse mAb with DAB staining.



Black line: Control Antigen (100 ng); Purple line: Antigen(10ng); Blue line: Antigen (50 ng); Red line: Antigen (100 ng);

## Storage

Store at 4°C short term. Aliquot and store at -20°C long term.

501 Changsheng S Rd, Nanhu Dist, Jiaxing, Zhejiang, China

Tel: 86 21 31007137 | E-mail: [save@bt-laboratory.com](mailto:save@bt-laboratory.com) | [www.bt-laboratory.com](http://www.bt-laboratory.com)