

CLL1 Monoclonal Antibody

Description

Product type	Antibody
Code	BT-MCA4159
Host	Mouse
Isotype	Mouse IgG2a
Size	100µL, 50µL
Immunogen	Purified recombinant fragment of human CLL1 (AA: extra 65-265) expressed in E. Coli.
Mol wt	30.8kDa
Species reactivity	Human
Clonality	Monoclonal
Recommended application	WB,ICC,FCM
Concentration	N/A
Full name	N/A
Synonyms	CLEC12A;MICL;CD371;CLL-1;DCAL-2

This product is for research use only, not for use in human, therapeutic or diagnostic procedure.

Background

This gene encodes a member of the C-type lectin/C-type lectin-like domain (CTL/CTLD) superfamily. Members of this family share a common protein fold and have diverse functions, such as cell adhesion, cell-cell signaling, glycoprotein turnover, and roles in inflammation and immune response. The protein encoded by this gene is a negative regulator of granulocyte and monocyte function. Several alternatively spliced transcript variants of this gene have been described, but the full-length nature of some of these variants has not been determined. This gene is closely linked to other CTL/CTLD superfamily members in the natural killer gene complex region on chromosome 12p13.

Recommended Dilution

WB: 1:500 - 1:2000

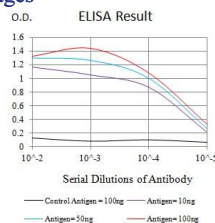
ICC: 1:200 - 1:500

FCM: 1:200 - 1:400

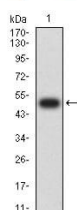
ELISA: 1:10000

Not yet tested in other applications.

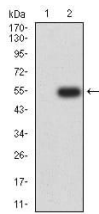
Images



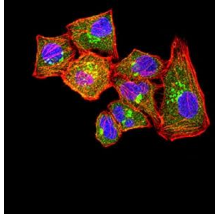
Black line: Control Antigen (100 ng);Purple line: Antigen (10ng); Blue line: Antigen (50 ng); Red line:Antigen (100 ng)



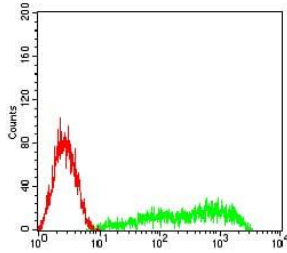
Western blot analysis using CLL1 mAb against human CLL1 (AA: extra 65-265) recombinant protein. (Expected MW is 49.7 kDa)



Western blot analysis using CLL1 mAb against HEK293 (1) and CLL1 (AA: extra 65-265)-hIgGFc transfected HEK293 (2) cell lysate.



Immunofluorescence analysis of HeLa cells using CLL1 mouse mAb (green). Blue: DRAQ5 fluorescent DNA dye. Red: Actin filaments have been labeled with Alexa Fluor- 555 phalloidin. Secondary antibody from Fisher (Cat#: 35503)



Flow cytometric analysis of HL-60 cells using CLL1 mouse mAb (green) and negative control (red).

Storage

Store at 4°C short term. Aliquot and store at -20°C long term.

501 Changsheng S Rd, Nanhu Dist, Jiaxing, Zhejiang, China

Tel: 86 21 31007137 | E-mail: save@bt-laboratory.com | www.bt-laboratory.com