

## mouse Lplunc1 Monoclonal Antibody

### Description

<b>Product type</b>	Antibody
<b>Code</b>	BT-MCA4160
<b>Host</b>	Mouse
<b>Isotype</b>	Mouse IgG1
<b>Size</b>	100µL, 50µL
<b>Immunogen</b>	Purified recombinant fragment of mouse Lplunc1 expressed in E. Coli.
<b>Mol wt</b>	52.4kDa
<b>Species reactivity</b>	Human
<b>Clonality</b>	Monoclonal
<b>Recommended application</b>	IHC,ICC,FCM
<b>Concentration</b>	N/A
<b>Full name</b>	N/A
<b>Synonyms</b>	Bpifb1;RP23-154J12.1

This product is for research use only, not for use in human, therapeutic or diagnostic procedure.

### Background

Palate, lung, and nasal epithelium clone (Plunc, now renamed Splunc1) is a small secreted protein expressed in the oropharynx and upper airways of humans, mice, rats, and cows. This protein is structurally homologous to known mediators of host defense against gram-negative bacteria.

### Recommended Dilution

WB: 1:500 - 1:2000

IHC-p: 1:200 - 1:1000

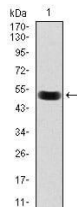
ICC: 1:200 - 1:1000

FCM: 1:200 - 1:400

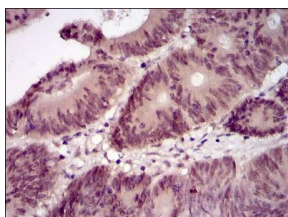
ELISA: 1:10000

Not yet tested in other applications.

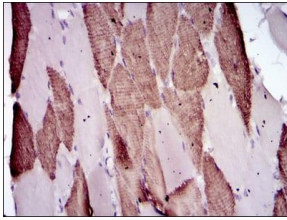
### Images



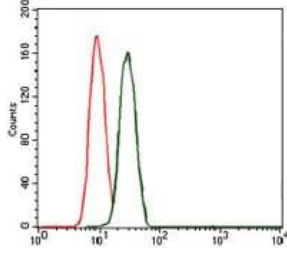
Western blot analysis using Lplunc1 mAb against mouse Lplunc1 (AA: 248-475) recombinant protein. (Expected MW is 50.8 kDa)



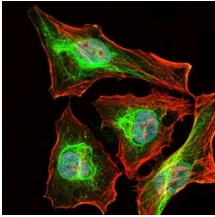
Immunohistochemical analysis of paraffin-embedded colon cancer tissues using Lplunc1 mouse mAb with DAB staining.



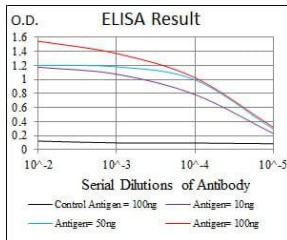
Immunohistochemical analysis of paraffin-embedded muscle tissues using Lplunc1 mouse mAb with DAB staining.



Flow cytometric analysis of MCF-7 cells using Lplunc1 mouse mAb (green) and negative control (red).



Immunofluorescence analysis of HeLa cells using Lplunc1 mouse mAb (green). Blue: DRAQ5 fluorescent DNA dye. Red: Actin filaments have been labeled with Alexa Fluor-555 phalloidin.



Black line: Control Antigen (100 ng); Purple line: Antigen(10ng); Blue line: Antigen (50 ng); Red line: Antigen (100 ng);

## Storage

Store at 4°C short term. Aliquot and store at -20°C long term.

501 Changsheng S Rd, Nanhu Dist, Jiaxing, Zhejiang, China

Tel: 86 21 31007137 | E-mail: [save@bt-laboratory.com](mailto:save@bt-laboratory.com) | [www.bt-laboratory.com](http://www.bt-laboratory.com)