

EPCAM Monoclonal Antibody

Description

Product type	Antibody
Code	BT-MCA4179
Host	Mouse
Isotype	Mouse IgG1
Size	100µL, 50µL
Immunogen	Purified recombinant fragment of human EPCAM (AA: 24-265) expressed in E. Coli.
Mol wt	35kDa
Species reactivity	Human
Clonality	Monoclonal
Recommended application	WB,IHC,FCM
Concentration	N/A
Full name	N/A
Synonyms	ESA;KSA;M4S1;MK-1;DIAR5;EGP-2;EGP40;KS1/4;MIC18;TROP1;EGP314;HNPCC8;TACSTD1

This product is for research use only, not for use in human, therapeutic or diagnostic procedure.

Background

N/A

Recommended Dilution

WB: 1:500 - 1:2000

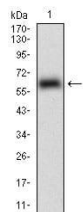
IHC-p: 1:200 - 1:1000

FCM: 1:200 - 1:400

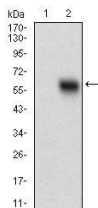
ELISA: 1:10000

Not yet tested in other applications.

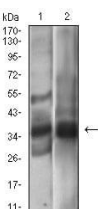
Images



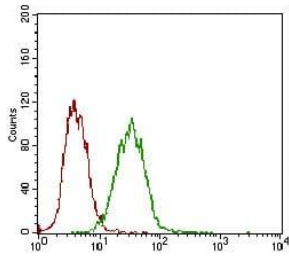
Western blot analysis using EPCAM mAb against human EPCAM (AA: 24-265) recombinant protein. (Expected MW is 53.4 kDa)



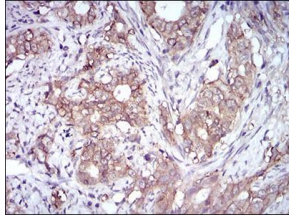
Western blot analysis using EPCAM mAb against HEK293 (1) and EPCAM (AA: 24-265)-hIgGfC transfected HEK293 (2) cell lysate.



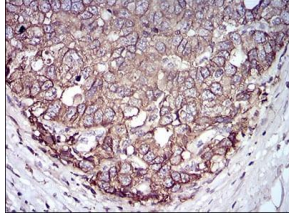
Western blot analysis using EPCAM mouse mAb against A431 (1), MCF-7 (2) cell lysate.



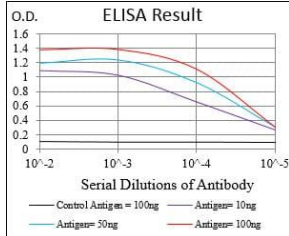
Flow cytometric analysis of A431 cells using EPCAM mouse mAb (green) and negative control (red).



Immunohistochemical analysis of paraffin-embedded cervical cancer tissues using EPCAM mouse mAb with DAB staining.



Immunohistochemical analysis of paraffin-embedded esophageal cancer tissues using EPCAM mouse mAb with DAB staining.



Black line: Control Antigen (100 ng); Purple line: Antigen(10ng); Blue line: Antigen (50 ng); Red line: Antigen (100 ng);

Storage

Store at 4°C short term. Aliquot and store at -20°C long term.

501 Changsheng S Rd, Nanhu Dist, Jiaxing, Zhejiang, China

Tel: 86 21 31007137 | E-mail: save@bt-laboratory.com | www.bt-laboratory.com