

MSH2 Monoclonal Antibody

Description

Product type	Antibody
Code	BT-MCA4189
Host	Mouse
Isotype	Mouse IgG1
Size	100µL, 50µL
Immunogen	Purified recombinant fragment of human MSH2 (AA: 442-586) expressed in E. Coli.
Mol wt	104.7kDa
Species reactivity	Others
Clonality	Monoclonal
Recommended application	WB,IHC,ICC,FCM
Concentration	N/A
Full name	N/A
Synonyms	FCC1;COCA1;HNPCC;LCFS2;hMSH2;HNPCC1

This product is for research use only, not for use in human, therapeutic or diagnostic procedure.

Background

This locus is frequently mutated in hereditary nonpolyposis colon cancer (HNPCC). When cloned, it was discovered to be a human homolog of the E. coli mismatch repair gene mutS, consistent with the characteristic alterations in microsatellite sequences (RER+ phenotype) found in HNPCC. Two transcript variants encoding different isoforms have been found for this gene.

Recommended Dilution

WB: 1:500 - 1:2000

IHC-p: 1:200 - 1:1000

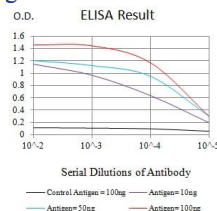
ICC: 1:200 - 1:1000

FCM: 1:200 - 1:400

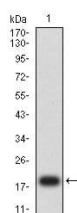
ELISA: 1:10000

Not yet tested in other applications.

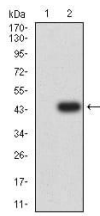
Images



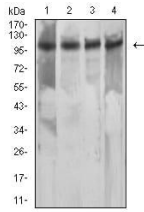
Black line: Control Antigen (100 ng);Purple line: Antigen (10ng); Blue line: Antigen (50 ng); Red line:Antigen (100 ng)



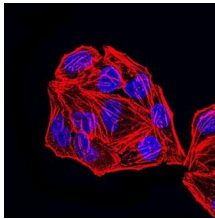
Western blot analysis using MSH2 mAb against human MSH2 (AA: 442-586) recombinant protein. (Expected MW is 19.6 kDa)



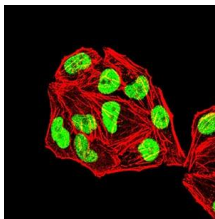
Western blot analysis using MSH2 mAb against HEK293 (1) and MSH2 (AA: 442-586)-hIgGFc transfected HEK293 (2) cell lysate.



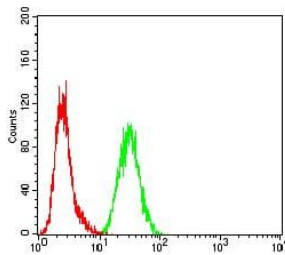
Western blot analysis using MSH2 mouse mAb against HeLa (1), NIH/3T3 (2), A549 (3), and A431 (4) cell lysate.



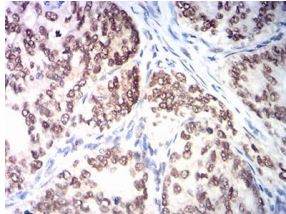
Immunofluorescence analysis of HeLa cells using MSH2 mouse mAb. Blue: DRAQ5 fluorescent DNA dye. Red: Actin filaments have been labeled with Alexa Fluor- 555 phalloidin.



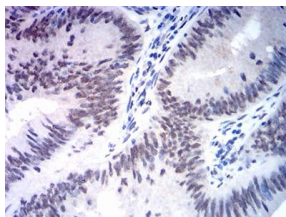
Immunofluorescence analysis of HeLa cells using MSH2 mouse mAb. Blue: DRAQ5 fluorescent DNA dye. Red: Actin filaments have been labeled with Alexa Fluor- 555 phalloidin.



Flow cytometric analysis of HeLa cells using MSH2 mouse mAb (green) and negative control (red).



Immunohistochemical analysis of paraffin-embedded cervical cancer tissues using MSH2 mouse mAb with DAB staining.



Immunohistochemical analysis of paraffin-embedded rectum cancer tissues using MSH2 mouse mAb with DAB staining.

Storage

Store at 4°C short term. Aliquot and store at -20°C long term.

501 Changsheng S Rd, Nanhu Dist, Jiaxing, Zhejiang, China

Tel: 86 21 31007137 | E-mail: save@bt-laboratory.com | www.bt-laboratory.com