

TDP43 Monoclonal Antibody

Description

Product type	Antibody
Code	BT-MCA4192
Host	Mouse
Isotype	Mouse IgG1
Size	100µL, 50µL
Immunogen	Purified recombinant fragment of human TDP43 (AA: free peptide) expressed in E. Coli.
Mol wt	44.7kDa
Species reactivity	N/A
Clonality	Monoclonal
Recommended application	WB,IHC,ICC,FCM
Concentration	N/A
Full name	N/A
Synonyms	ALS10;TDP-43

This product is for research use only, not for use in human, therapeutic or diagnostic procedure.

Background

HIV-1, the causative agent of acquired immunodeficiency syndrome (AIDS), contains an RNA genome that produces a chromosomally integrated DNA during the replicative cycle. Activation of HIV-1 gene expression by the transactivator Tat is dependent on an RNA regulatory element (TAR) located downstream of the transcription initiation site. The protein encoded by this gene is a transcriptional repressor that binds to chromosomally integrated TAR DNA and represses HIV-1 transcription. In addition, this protein regulates alternate splicing of the CFTR gene. A similar pseudogene is present on chromosome 20. [provided by RefSeq, Jul 2008]

Recommended Dilution

WB: 1:500 - 1:2000

IHC-p: 1:200 - 1:1000

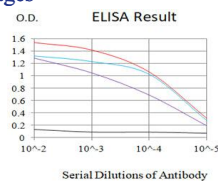
ICC: 1:200 - 1:1000

FCM: 1:200 - 1:400

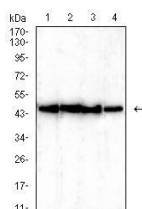
ELISA: 1:10000

Not yet tested in other applications.

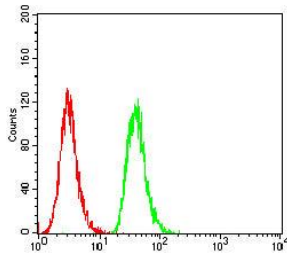
Images



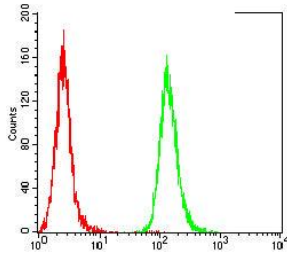
Black line: Control Antigen (100 ng);Purple line: Antigen (10ng); Blue line: Antigen (50 ng); Red line:Antigen (100 ng)



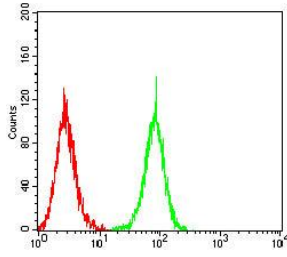
Western blot analysis using TDP43 mouse mAb against HeLa (1), HEK293 (2), MCF-7 (3), and A549 (4) cell lysate.



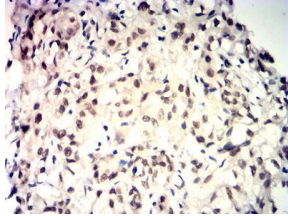
Flow cytometric analysis of A431 cells using TDP43 mouse mAb (green) and negative control (red).



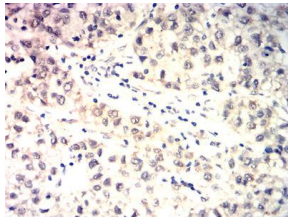
Flow cytometric analysis of HeLa cells using TDP43 mouse mAb (green) and negative control (red).



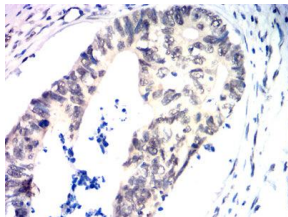
Flow cytometric analysis of HepG2 cells using TDP43 mouse mAb (green) and negative control (red).



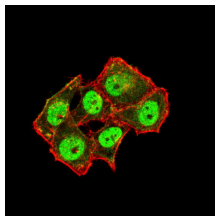
Immunohistochemical analysis of paraffin-embedded bladder cancer tissues using TDP43 mouse mAb with DAB staining.



Immunohistochemical analysis of paraffin-embedded liver cancer tissues using TDP43 mouse mAb with DAB staining.



Immunohistochemical analysis of paraffin-embedded rectal cancer tissues using TDP43 mouse mAb with DAB staining.



Immunofluorescence analysis of HeLa cells using TDP43 mouse mAb (green). Blue: DRAQ5 fluorescent DNA dye. Red: Actin filaments have been labeled with Alexa Fluor- 555 phalloidin. Secondary antibody from Fisher (Cat#: 35503)

Storage

Store at 4°C short term. Aliquot and store at -20°C long term.

