

BCR Monoclonal Antibody

Description

Product type	Antibody
Code	BT-MCA4196
Host	Mouse
Isotype	Mouse IgG1
Size	100µL, 50µL
Immunogen	Purified recombinant fragment of human BCR (AA: 139-280) expressed in E. Coli.
Mol wt	142.8kDa
Species reactivity	Human
Clonality	Monoclonal
Recommended application	WB,FCM
Concentration	N/A
Full name	N/A
Synonyms	ALL;CML;PHL;BCR1;D22S11;D22S662

This product is for research use only, not for use in human, therapeutic or diagnostic procedure.

Background

N/A

Recommended Dilution

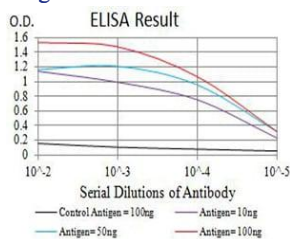
WB: 1:500 - 1:2000

FCM: 1:200 - 1:400

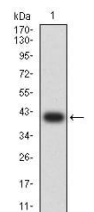
ELISA: 1:10000

Not yet tested in other applications.

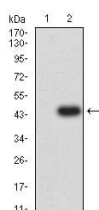
Images



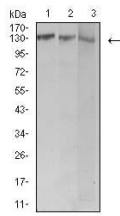
Black line: Control Antigen (100 ng);Purple line: Antigen (10ng); Blue line: Antigen (50 ng); Red line:Antigen (100 ng)



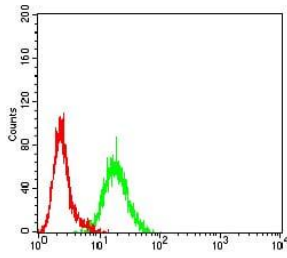
Western blot analysis using BCR mAb against human BCR (AA: 139-280) recombinant protein. (Expected MW is 41.6 kDa)



Western blot analysis using BCR mAb against HEK293 (1) and BCR (AA: 139-280)-hIgGfc transfected HEK293 (2) cell lysate.



Western blot analysis using BCR mouse mAb against Jurkat (1), HeLa (2), and Ramos (3) cell lysate.



Flow cytometric analysis of K562 cells using BCR mouse mAb (green) and negative control (red).

Storage

Store at 4°C short term. Aliquot and store at -20°C long term.

501 Changsheng S Rd, Nanhu Dist, Jiaxing, Zhejiang, China

Tel: 86 21 31007137 | E-mail: save@bt-laboratory.com | www.bt-laboratory.com