

CHRNA5 Monoclonal Antibody

Description

| | |
|--------------------------------|--|
| Product type | Antibody |
| Code | BT-MCA4210 |
| Host | Mouse |
| Isotype | Mouse IgG1 |
| Size | 100µL, 50µL |
| Immunogen | Purified recombinant fragment of human CHRNA5 (AA: extra 23-254) expressed in E. Coli. |
| Mol wt | 53kDa |
| Species reactivity | Human,Rat |
| Clonality | Monoclonal |
| Recommended application | WB,FCM |
| Concentration | N/A |
| Full name | N/A |
| Synonyms | LNCR2 |

This product is for research use only, not for use in human, therapeutic or diagnostic procedure.

Background

N/A

Recommended Dilution

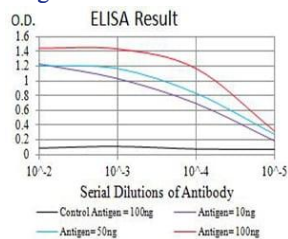
WB: 1:500 - 1:2000

FCM: 1:200 - 1:400

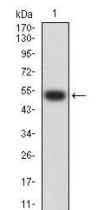
ELISA: 1:10000

Not yet tested in other applications.

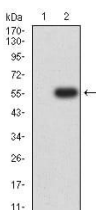
Images



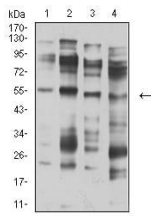
Black line: Control Antigen (100 ng);Purple line: Antigen (10ng); Blue line: Antigen (50 ng); Red line:Antigen (100 ng)



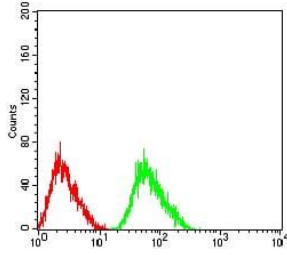
Western blot analysis using CHRNA5 mAb against human CHRNA5 (AA: 23-254) recombinant protein. (Expected MW is 52.5 kDa)



Western blot analysis using CHRNA5 mAb against HEK293 (1) and CHRNA5 (AA: 23-254)-hlgGFc transfected HEK293 (2) cell lysate.



Western blot analysis using CHRNA5 mouse mAb against membrane protein lysate of C6 (1), membrane protein lysate of SK-N-SH (2), membrane protein lysate of C6 (3), and C6 (4) cell lysate.



Flow cytometric analysis of SK-N-SH cells using CHRNA5 mouse mAb (green) and negative control (red).

Storage

Store at 4°C short term. Aliquot and store at -20°C long term.

501 Changsheng S Rd, Nanhu Dist, Jiaxing, Zhejiang, China

Tel: 86 21 31007137 | E-mail: save@bt-laboratory.com | www.bt-laboratory.com