

KRT9 Monoclonal Antibody

Description

Product type	Antibody
Code	BT-MCA4215
Host	Mouse
Isotype	Mouse IgG2b
Size	100µL, 50µL
Immunogen	Purified recombinant fragment of human KRT9 (AA: 153-460) expressed in E. Coli.
Mol wt	62kDa
Species reactivity	Others
Clonality	Monoclonal
Recommended application	WB,FCM
Concentration	N/A
Full name	N/A
Synonyms	K9;CK-9;EPPK

This product is for research use only, not for use in human, therapeutic or diagnostic procedure.

Background

This gene encodes the type I keratin 9, an intermediate filament chain expressed only in the terminally differentiated epidermis of palms and soles. Mutations in this gene cause epidermolytic palmoplantar keratoderma.

Recommended Dilution

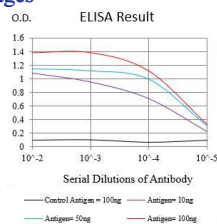
WB: 1:500 - 1:2000

FCM: 1:200 - 1:400

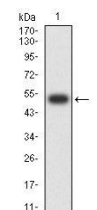
ELISA: 1:10000

Not yet tested in other applications.

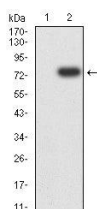
Images



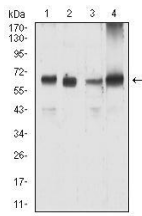
Black line: Control Antigen (100 ng);Purple line: Antigen (10ng); Blue line: Antigen (50 ng); Red line:Antigen (100 ng)



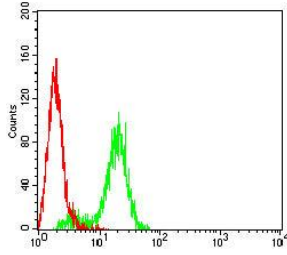
Western blot analysis using KRT9 mAb against human KRT9 (AA: 153-460) recombinant protein. (Expected MW is 51.7 kDa)



Western blot analysis using KRT9 mAb against HEK293-6e (1) and KRT9 (AA: 153-460)-hIgGfc transfected HEK293-6e (2) cell lysate.



Western blot analysis using KRT9 mouse mAb against HL-60 (1), A431 (2), HeLa (3), and COS7 (4) cell lysate.



Flow cytometric analysis of HeLa cells using KRT9 mouse mAb (green) and negative control (red).

Storage

Store at 4°C short term. Aliquot and store at -20°C long term.

501 Changsheng S Rd, Nanhu Dist, Jiaxing, Zhejiang, China

Tel: 86 21 31007137 | E-mail: save@bt-laboratory.com | www.bt-laboratory.com