

SMCP Monoclonal Antibody

Description

Product type	Antibody
Code	BT-MCA4218
Host	Mouse
Isotype	Mouse IgG2b
Size	100µL, 50µL
Immunogen	Purified recombinant fragment of human SMCP (AA: FULL(1-116)) expressed in E. Coli.
Mol wt	12.8kDa
Species reactivity	Human
Clonality	Monoclonal
Recommended application	ICC
Concentration	N/A
Full name	N/A
Synonyms	MCS;MCSP;HSMCSGEN1

This product is for research use only, not for use in human, therapeutic or diagnostic procedure.

Background

Sperm mitochondria differ in morphology and subcellular localization from those of somatic cells. They are elongated, flattened, and arranged circumferentially to form a helical coiled sheath in the midpiece of the sperm flagellum. The protein encoded by this gene localizes to the capsule associated with the mitochondrial outer membranes and is thought to function in the organization and stabilization of the helical structure of the sperm's mitochondrial sheath.

Recommended Dilution

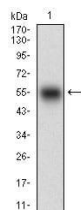
WB: 1:500 - 1:2000

ICC: 1:200 - 1:1000

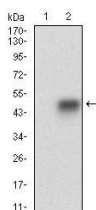
ELISA: 1:10000

Not yet tested in other applications.

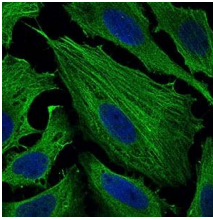
Images



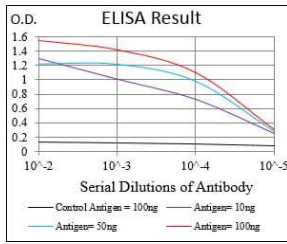
Western blot analysis using SMCP mAb against human SMCP (AA: FULL(1-116)) recombinant protein. (Expected MW is 38.3 kDa)



Western blot analysis using SMCP mAb against HEK293 (1) and SMCP (AA: FULL(1-116))-hlgGfc transfected HEK293 (2) cell lysate.



Immunofluorescence analysis of HeLa cells using SMCP mouse mAb (green). Blue: DRAQ5 fluorescent DNA dye. Secondary antibody from Fisher (Cat#: 35503)



Black line: Control Antigen (100 ng); Purple line: Antigen(10ng); Blue line: Antigen (50 ng); Red line: Antigen (100 ng);

Storage

Store at 4°C short term. Aliquot and store at -20°C long term.

501 Changsheng S Rd, Nanhu Dist, Jiaxing, Zhejiang, China

Tel: 86 21 31007137 | E-mail: save@bt-laboratory.com | www.bt-laboratory.com