

## MLH1 Monoclonal Antibody

### Description

<b>Product type</b>	Antibody
<b>Code</b>	BT-MCA4220
<b>Host</b>	Mouse
<b>Isotype</b>	Mouse IgG1
<b>Size</b>	100µL, 50µL
<b>Immunogen</b>	Purified recombinant fragment of human MLH1 (AA:381-483) expressed in E. Coli.
<b>Mol wt</b>	84.6kDa
<b>Species reactivity</b>	Others
<b>Clonality</b>	Monoclonal
<b>Recommended application</b>	WB,IHC,FCM
<b>Concentration</b>	N/A
<b>Full name</b>	N/A
<b>Synonyms</b>	FCC2;COCA2;HNPCC;hMLH1;HNPCC2

This product is for research use only, not for use in human, therapeutic or diagnostic procedure.

### Background

The protein encoded by this gene can heterodimerize with mismatch repair endonuclease PMS2 to form MutL alpha, part of the DNA mismatch repair system. When MutL alpha is bound by MutS beta and some accessory proteins, the PMS2 subunit of MutL alpha introduces a single-strand break near DNA mismatches, providing an entry point for exonuclease degradation. The encoded protein is also involved in DNA damage signaling and can heterodimerize with DNA mismatch repair protein MLH3 to form MutL gamma, which is involved in meiosis. This gene was identified as a locus frequently mutated in hereditary nonpolyposis colon cancer (HNPCC). [provided by RefSeq, Aug 2017]

### Recommended Dilution

WB: 1:500 - 1:2000

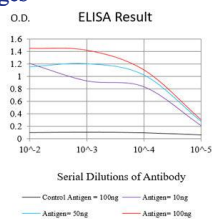
IHC-p: 1:200-1:1000

FCM: 1:200-1:400

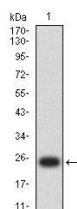
ELISA: 1:10000

Not yet tested in other applications.

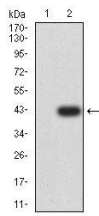
### Images



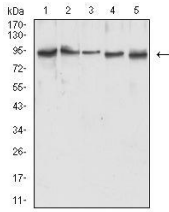
Black line: Control Antigen (100 ng);Purple line: Antigen (10ng); Blue line: Antigen (50 ng); Red line: Antigen (100 ng)



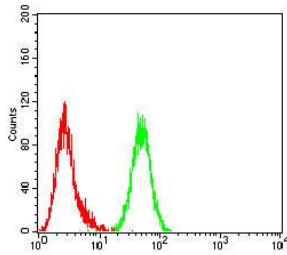
Western blot analysis using MLH1 mAb against human MLH1 (AA: 381-483) recombinant protein. (Expected MW is 25.1 kDa)



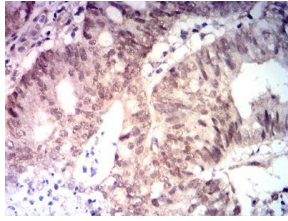
Western blot analysis using MLH1 mAb against HEK293 (1) and MLH1 (AA: 381-483)-hIgGFc transfected HEK293 (2) cell lysate.



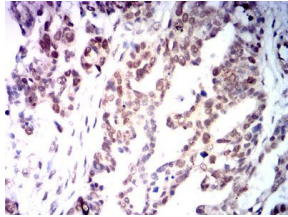
Western blot analysis using MLH1 mouse mAb against HeLa (1), Jurkat (2), A431 (3), HepG2 (4), and MCF-7 (5) cell lysate.



Flow cytometric analysis of HeLa cells using MLH1 mouse mAb (green) and negative control (red).



Immunohistochemical analysis of paraffin-embedded Colon cancer tissues using MLH1 mouse mAb with DAB staining.



Immunohistochemical analysis of paraffin-embedded Ovarian cancer tissues using MLH1 mouse mAb with DAB staining.

### Storage

Store at 4°C short term. Aliquot and store at -20°C long term.

501 Changsheng S Rd, Nanhu Dist, Jiaxing, Zhejiang, China

Tel: 86 21 31007137 | E-mail: [save@bt-laboratory.com](mailto:save@bt-laboratory.com) | [www.bt-laboratory.com](http://www.bt-laboratory.com)