

APOL1 Monoclonal Antibody

Description

| | |
|-------------------------|--|
| Product type | Antibody |
| Code | BT-MCA4221 |
| Host | Mouse |
| Isotype | Mouse IgG1 |
| Size | 100µL, 50µL |
| Immunogen | Purified recombinant fragment of APOL1 expressed in E. Coli. |
| Mol wt | 44kDa |
| Species reactivity | Human |
| Clonality | Monoclonal |
| Recommended application | WB |
| Concentration | N/A |
| Full name | N/A |
| Synonyms | APOL, APO-L, APOL- I |

This product is for research use only, not for use in human, therapeutic or diagnostic procedure.

Background

APOL1 (apolipoprotein L, 1), also known as APOL, APO-L, APOL-I. Entrez Protein NP_001130012. It is a 395aa secreted high density lipoprotein which binds to apolipoprotein A-I. And is involved in the formation of most cholesteryl esters in plasma and also promotes efflux of cholesterol from cells. The apolipoprotein L gene family encodes six highly homologous proteins designated apoL-I to -VI. This apolipoprotein L family member may play a role in lipid exchange and transport throughout the body, as well as in reverse cholesterol transport from peripheral cells to the liver. Several different transcript variants encoding different isoforms have been found for this gene.

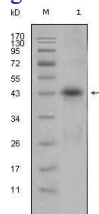
Recommended Dilution

WB: 1:500 - 1:2000

ELISA: 1:10000

Not yet tested in other applications.

Images



Western blot analysis using APOL1 mouse mAb against human plasma (1).

Storage

Store at 4°C short term. Aliquot and store at -20°C long term.