

## ALB Monoclonal Antibody

### Description

<b>Product type</b>	Antibody
<b>Code</b>	BT-MCA4223
<b>Host</b>	Mouse
<b>Isotype</b>	Mouse IgG2b
<b>Size</b>	100µL, 50µL
<b>Immunogen</b>	Purified recombinant fragment of human ALB (AA: 410-609) expressed in E. Coli.
<b>Mol wt</b>	69.4kDa
<b>Species reactivity</b>	Others
<b>Clonality</b>	Monoclonal
<b>Recommended application</b>	IHC,ICC,FCM
<b>Concentration</b>	N/A
<b>Full name</b>	N/A
<b>Synonyms</b>	HSA;PRO0883;PRO0903;PRO1341

This product is for research use only, not for use in human, therapeutic or diagnostic procedure.

### Background

This gene encodes the most abundant protein in human blood. This protein functions in the regulation of blood plasma colloid osmotic pressure and acts as a carrier protein for a wide range of endogenous molecules including hormones, fatty acids, and metabolites, as well as exogenous drugs. Additionally, this protein exhibits an esterase-like activity with broad substrate specificity. The encoded preproprotein is proteolytically processed to generate the mature protein. A peptide derived from this protein, EPI-X4, is an endogenous inhibitor of the CXCR4 chemokine receptor. [provided by RefSeq, Jul 2016]

### Recommended Dilution

WB: 1:500 - 1:2000

IHC-p: 1:200-1:1000

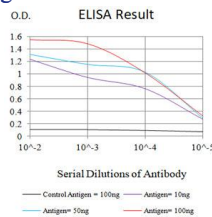
ICC: 1:200 - 1:1000

FCM: 1:200-1:400

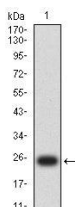
ELISA: 1:10000

Not yet tested in other applications.

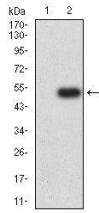
### Images



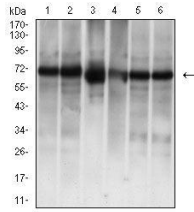
Black line: Control Antigen (100 ng);Purple line: Antigen (10ng); Blue line: Antigen (50 ng); Red line: Antigen (100 ng)



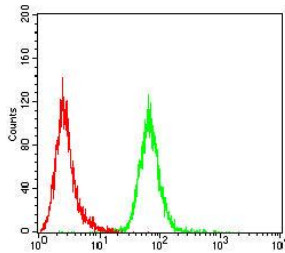
Western blot analysis using ALB mAb against human ALB (AA: 410-609) recombinant protein. (Expected MW is 25.4 kDa)



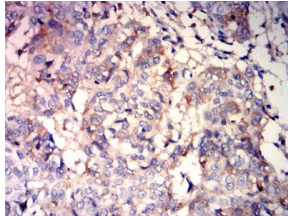
Western blot analysis using ALB mAb against HEK293-6e (1) and ALB (AA: 410-609)-hIgGfc transfected HEK293-6e (2) cell lysate.



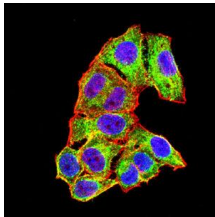
Western blot analysis using ALB mouse mAb against COS-7 (1), HepG2 (2), serum (3), Liver (4), BEL-7402 (5), and HL7702 (6) cell lysate.



Flow cytometric analysis of HepG2 cells using ALB mouse mAb (green) and negative control (red).



Immunohistochemical analysis of paraffin-embedded bladder cancer tissues using ALB mouse mAb with DAB staining.



Immunofluorescence analysis of HeLa cells using ALB mouse mAb (green). Blue: DRAQ5 fluorescent DNA dye. Red: Actin filaments have been labeled with Alexa Fluor- 555 phalloidin. Secondary antibody from Fisher (Cat#: 35503)

### Storage

Store at 4°C short term. Aliquot and store at -20°C long term.

501 Changsheng S Rd, Nanhu Dist, Jiaxing, Zhejiang, China

Tel: 86 21 31007137 | E-mail: [save@bt-laboratory.com](mailto:save@bt-laboratory.com) | [www.bt-laboratory.com](http://www.bt-laboratory.com)