

## LRRK2 Monoclonal Antibody

### Description

<b>Product type</b>	Antibody
<b>Code</b>	BT-MCA4227
<b>Host</b>	Mouse
<b>Isotype</b>	Mouse IgG1
<b>Size</b>	100µL, 50µL
<b>Immunogen</b>	Purified recombinant fragment of human LRRK2 (AA: 300-530) expressed in E. Coli.
<b>Mol wt</b>	286kDa
<b>Species reactivity</b>	Human
<b>Clonality</b>	Monoclonal
<b>Recommended application</b>	IHC,FCM
<b>Concentration</b>	N/A
<b>Full name</b>	N/A
<b>Synonyms</b>	PARK8;RIPK7;ROCO2;AURA17;DARDARIN

This product is for research use only, not for use in human, therapeutic or diagnostic procedure.

### Background

This gene is a member of the leucine-rich repeat kinase family and encodes a protein with an ankryin repeat region, a leucine-rich repeat (LRR) domain, a kinase domain, a DFG-like motif, a RAS domain, a GTPase domain, a MLK-like domain, and a WD40 domain. The protein is present largely in the cytoplasm but also associates with the mitochondrial outer membrane. Mutations in this gene have been associated with Parkinson disease-8.

### Recommended Dilution

WB: 1:500 - 1:2000

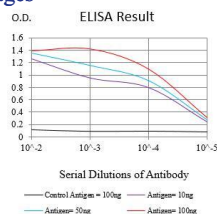
IHC-p: 1:200 - 1:1000

FCM: 1:200 - 1:400

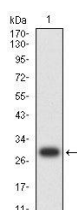
ELISA: 1:10000

Not yet tested in other applications.

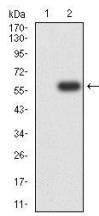
### Images



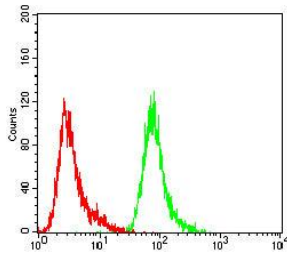
Black line: Control Antigen (100 ng);Purple line: Antigen (10ng); Blue line: Antigen (50 ng); Red line:Antigen (100 ng)



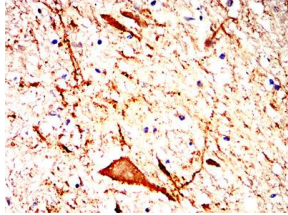
Western blot analysis using LRRK2 mAb against human LRRK2 (AA: 300-530) recombinant protein. (Expected MW is 29.3 kDa)



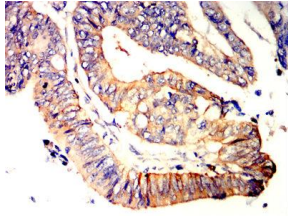
Western blot analysis using LRRK2 mAb against HEK293-6e (1) and LRRK2 (AA: 300-530)-hlgGFc transfected HEK293-6e (2) cell lysate.



Flow cytometric analysis of HeLa cells using LRRK2 mouse mAb (green) and negative control (red).



Immunohistochemical analysis of paraffin-embedded brain tissues using LRRK2 mouse mAb with DAB staining.



Immunohistochemical analysis of paraffin-embedded rectum cancer tissues using LRRK2 mouse mAb with DAB staining.

### Storage

Store at 4°C short term. Aliquot and store at -20°C long term.

501 Changsheng S Rd, Nanhu Dist, Jiaxing, Zhejiang, China

Tel: 86 21 31007137 | E-mail: [save@bt-laboratory.com](mailto:save@bt-laboratory.com) | [www.bt-laboratory.com](http://www.bt-laboratory.com)