

IDH1 Monoclonal Antibody

Description

Product type	Antibody
Code	BT-MCA4246
Host	Mouse
Isotype	Mouse IgG1
Size	100μL, 50μL
Immunogen	Purified recombinant fragment of human IDH1 (AA: 156-298) expressed in E. Coli.
Mol wt	46.7kDa
Species reactivity	Human,Mouse,Monkey
Clonality	Monoclonal
Recommended application	WB,FCM
Concentration	N/A
Full name	N/A
Synonyms	IDH;IDP;IDCD;IDPC;PICD;HEL-216;HEL-S-26

This product is for research use only, not for use in human, therapeutic or diagnostic procedure.

Background

N/A

Recommended Dilution

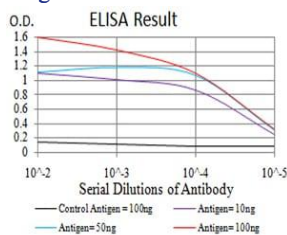
WB: 1:500 - 1:2000

FCM: 1:200 - 1:400

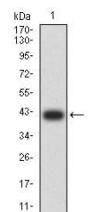
ELISA: 1:10000

Not yet tested in other applications.

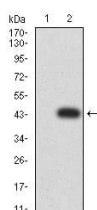
Images



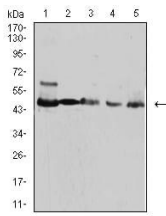
Black line: Control Antigen (100 ng);Purple line: Antigen (10ng); Blue line: Antigen (50 ng); Red line:Antigen (100 ng)



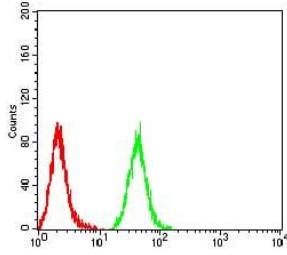
Western blot analysis using IDH1 mAb against human IDH1 (AA: 156-298) recombinant protein. (Expected MW is 41.8 kDa)



Western blot analysis using IDH1 mAb against HEK293 (1) and IDH1 (AA: 156-298)-hIgGfc transfected HEK293 (2) cell lysate.



Western blot analysis using IDH1 mouse mAb against HepG2 (1), NIH/3T3 (2), C2C12 (3), COS7 (4), and SW480 (5) cell lysate.



Flow cytometric analysis of HeLa cells using IDH1 mouse mAb (green) and negative control (red).

Storage

Store at 4°C short term. Aliquot and store at -20°C long term.

501 Changsheng S Rd, Nanhu Dist, Jiaxing, Zhejiang, China

Tel: 86 21 31007137 | E-mail: save@bt-laboratory.com | www.bt-laboratory.com