

ALPI Monoclonal Antibody

Description

Product type	Antibody
Code	BT-MCA4247
Host	Mouse
Isotype	Mouse IgG1
Size	100µL, 50µL
Immunogen	Purified recombinant fragment of human ALPI (AA: 397-458) expressed in E. Coli.
Mol wt	56.8kDa
Species reactivity	Human
Clonality	Monoclonal
Recommended application	WB,FCM
Concentration	N/A
Full name	N/A
Synonyms	IAP

This product is for research use only, not for use in human, therapeutic or diagnostic procedure.

Background

There are at least four distinct but related alkaline phosphatases: intestinal, placental, placental-like, and liver/bone/kidney (tissue non-specific). The intestinal alkaline phosphatase gene encodes a digestive brush-border enzyme. This enzyme is upregulated during small intestinal epithelial cell differentiation.

Recommended Dilution

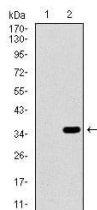
WB: 1:500 - 1:2000

FCM: 1:200 - 1:400

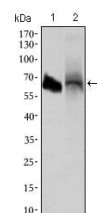
ELISA: 1:10000

Not yet tested in other applications.

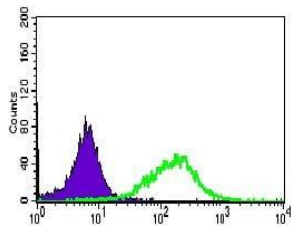
Images



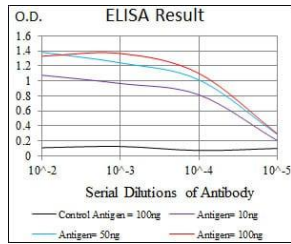
Western blot analysis using ALPI mAb against HEK293 (1) and ALPI (AA: 397-458)-hIgGFc transfected HEK293 (2) cell lysate.



Western blot analysis using ALPI mouse mAb against HL60 (1) and HepG2 (2) cell lysate.



Flow cytometric analysis of HepG2 cells using ALPI mouse mAb (green) and negative control (purple).



Black line: Control Antigen (100 ng); Purple line: Antigen(10ng); Blue line: Antigen (50 ng); Red line: Antigen (100 ng);

Storage

Store at 4°C short term. Aliquot and store at -20°C long term.

501 Changsheng S Rd, Nanhu Dist, Jiaxing, Zhejiang, China

Tel: 86 21 31007137 | E-mail: save@bt-laboratory.com | www.bt-laboratory.com