

## KCNK1 Monoclonal Antibody

### Description

|                                |  |
|--------------------------------|--|
| <b>Product type</b>            | Antibody   |
| <b>Code</b>                    | BT-MCA4250   |
| <b>Host</b>                    | Mouse  |
| <b>Isotype</b>                 | Mouse IgG2b  |
| <b>Size</b>                    | 100µL, 50µL  |
| <b>Immunogen</b>               | Purified recombinant fragment of human KCNK1 (AA: extra mix) expressed in E. Coli. |
| <b>Mol wt</b>                  | 38.1kDa  |
| <b>Species reactivity</b>      | Others   |
| <b>Clonality</b>               | Monoclonal   |
| <b>Recommended application</b> | IHC,FCM  |
| <b>Concentration</b>           | N/A  |
| <b>Full name</b>               | N/A  |
| <b>Synonyms</b>                | DPK;HOHO;K2P1;KCN01;TWIK1;K2p1.1;TWIK-1  |

This product is for research use only, not for use in human, therapeutic or diagnostic procedure.

### Background

This gene encodes one of the members of the superfamily of potassium channel proteins containing two pore-forming P domains. The product of this gene has not been shown to be a functional channel, however, it may require other non-pore-forming proteins for activity. [provided by RefSeq, Jul 2008]

### Recommended Dilution

WB: 1:500 - 1:2000

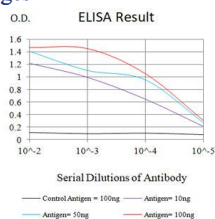
IHC-p: 1:200 - 1:1000

FCM: 1:200 - 1:400

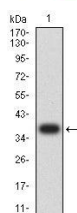
ELISA: 1:10000

Not yet tested in other applications.

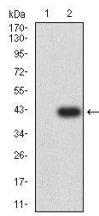
### Images



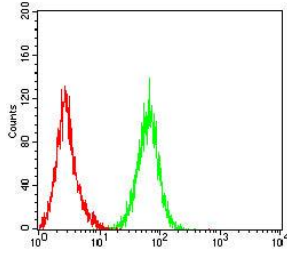
Black line: Control Antigen (100 ng);Purple line: Antigen (10ng); Blue line: Antigen (50 ng); Red line:Antigen (100 ng)



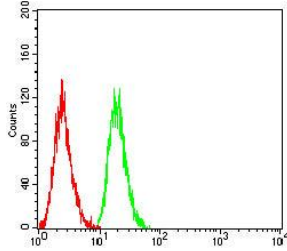
Western blot analysis using KCNK1 mAb against human KCNK1 (AA: extra mix) recombinant protein. (Expected MW is 36.7 kDa)



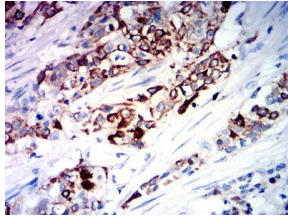
Western blot analysis using KCNK1 mAb against HEK293-6e (1) and KCNK1 (AA: extra mix)-hlgGFc transfected HEK293-6e (2) cell lysate.



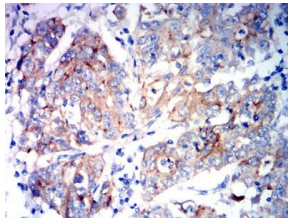
Flow cytometric analysis of C6 cells using KCNK1 mouse mAb (green) and negative control (red).



Flow cytometric analysis of HepG2 cells using KCNK1 mouse mAb (green) and negative control (red).



Immunohistochemical analysis of paraffin-embedded esophageal cancer tissues using KCNK1 mouse mAb with DAB staining.



Immunohistochemical analysis of paraffin-embedded stomach cancer tissues using KCNK1 mouse mAb with DAB staining.

### Storage

Store at 4°C short term. Aliquot and store at -20°C long term.

501 Changsheng S Rd, Nanhui Dist, Jiaying, Zhejiang, China

Tel: 86 21 31007137 | E-mail: [save@bt-laboratory.com](mailto:save@bt-laboratory.com) | [www.bt-laboratory.com](http://www.bt-laboratory.com)