

EIF2A Monoclonal Antibody

Description

Product type	Antibody
Code	BT-MCA4255
Host	Mouse
Isotype	Mouse IgG1
Size	100 μ L, 50 μ L
Immunogen	Purified recombinant fragment of human EIF2A (AA: 448-576) expressed in E. Coli.
Mol wt	65kDa
Species reactivity	Human,Mouse,Monkey,Rat
Clonality	Monoclonal
Recommended application	WB,IHC,FCM
Concentration	N/A
Full name	N/A
Synonyms	CDA02;EIF-2A;MST089;MSTP004;MSTP089

This product is for research use only, not for use in human, therapeutic or diagnostic procedure.

Background

EIF2A is a 65-kD protein that catalyzes the formation of puromycin-sensitive 80S preinitiation complexes.

Recommended Dilution

WB: 1:500 - 1:2000

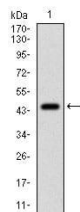
IHC-p: 1:200 - 1:1000

FCM: 1:200 - 1:400

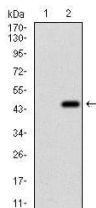
ELISA: 1:10000

Not yet tested in other applications.

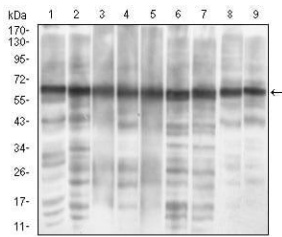
Images



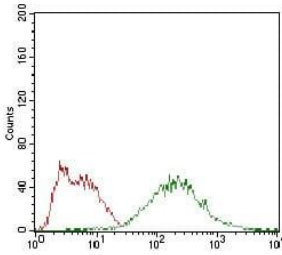
Western blot analysis using EIF2A mAb against human EIF2A (AA: 448-576) recombinant protein.
(Expected MW is 40.3 kDa)



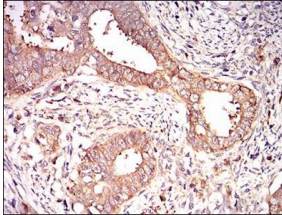
Western blot analysis using EIF2A mAb against HEK293 (1) and EIF2A (AA: 448-576)-hIgGFc transfected HEK293 (2) cell lysate.



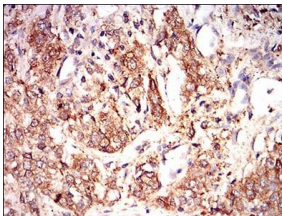
Western blot analysis using EIF2A mouse mAb against MCF-7 (1), PC-12 (2), HepG2 (3), Hela (4), Cos7 (5), K562 (6), Jurkat (7), A431 (8) and NIH/3T3 (9) cell lysate.



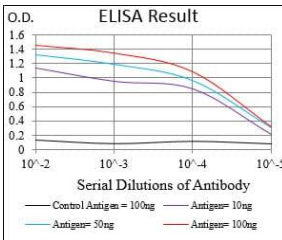
Flow cytometric analysis of HepG2 cells using EIF2A mouse mAb (green) and negative control (red).



Immunohistochemical analysis of paraffin-embedded cervical cancer tissues using EIF2A mouse mAb with DAB staining.



Immunohistochemical analysis of paraffin-embedded bladder cancer tissues using EIF2A mouse mAb with DAB staining.



Black line: Control Antigen (100 ng); Purple line: Antigen(10ng); Blue line: Antigen (50 ng); Red line: Antigen (100 ng);

Storage

Store at 4°C short term. Aliquot and store at -20°C long term.

501 Changsheng S Rd, Nanhu Dist, Jiaxing, Zhejiang, China

Tel: 86 21 31007137 | E-mail: save@bt-laboratory.com | www.bt-laboratory.com