

MRPL42 Monoclonal Antibody

Description

Product type	Antibody
Code	BT-MCA4262
Host	Mouse
Isotype	Mouse IgG1
Size	100µL, 50µL
Immunogen	Purified recombinant fragment of human MRPL42 (AA: 10-142) expressed in E. Coli.
Mol wt	16.6kDa
Species reactivity	Human
Clonality	Monoclonal
Recommended application	WB,IHC,FCM
Concentration	N/A
Full name	N/A
Synonyms	L31MT;L42MT;S32MT;MRPL31;MRPS32;PTD007;RPML31;HSPC204;MRP-L31;MRP-L42;MRP-S32

This product is for research use only, not for use in human, therapeutic or diagnostic procedure.

Background

N/A

Recommended Dilution

WB: 1:500 - 1:2000

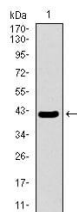
IHC-p: 1:200 - 1:1000

FCM: 1:200 - 1:400

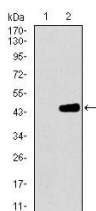
ELISA: 1:10000

Not yet tested in other applications.

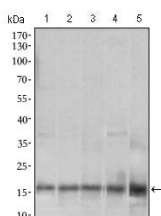
Images



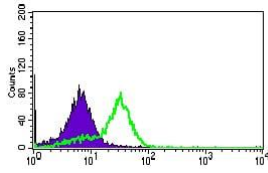
Western blot analysis using MRPL42 mAb against human MRPL42 recombinant protein. (Expected MW is 41.2 kDa)



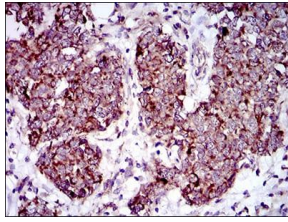
Western blot analysis using MRPL42 mAb against HEK293 (1) and MRPL42 (AA: 10-142)-hIgGfc transfected HEK293 (2) cell lysate.



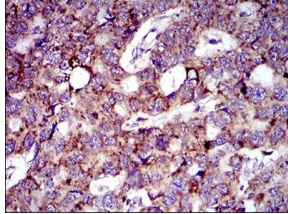
Western blot analysis using MRPL42 mouse mAb against HL7702 (1), SMMC-7721 (2), HEK293 (3), HeLa (4) and Raji (5) cell lysate.



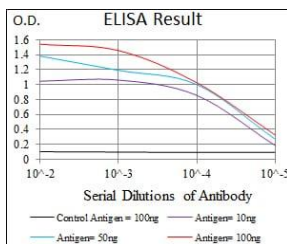
Flow cytometric analysis of HepG2 cells using MRPL42 mouse mAb (green) and negative control (purple).



Immunohistochemical analysis of paraffin-embedded breast cancer tissues using MRPL42 mouse mAb with DAB staining.



Immunohistochemical analysis of paraffin-embedded esophageal cancer tissues using MRPL42 mouse mAb with DAB staining.



Black line: Control Antigen (100 ng); Purple line: Antigen(10ng); Blue line: Antigen (50 ng); Red line: Antigen (100 ng);

Storage

Store at 4°C short term. Aliquot and store at -20°C long term.

501 Changsheng S Rd, Nanhu Dist, Jiaxing, Zhejiang, China

Tel: 86 21 31007137 | E-mail: save@bt-laboratory.com | www.bt-laboratory.com