

EZH2 Monoclonal Antibody

Description

Product type	Antibody
Code	BT-MCA4270
Host	Mouse
Isotype	Mouse IgG1
Size	100µL, 50µL
Immunogen	Purified recombinant fragment of human EZH2 (AA: 1-194) expressed in E. Coli.
Mol wt	85.4kDa
Species reactivity	Human
Clonality	Monoclonal
Recommended application	IHC,FCM
Concentration	N/A
Full name	N/A
Synonyms	WVS;ENX1;EZH1;KMT6;WVS2;ENX-1;EZH2b;KMT6A

This product is for research use only, not for use in human, therapeutic or diagnostic procedure.

Background

N/A

Recommended Dilution

WB: 1:500 - 1:2000

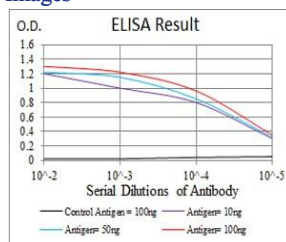
IHC-p: 1:200 - 1:1000

FCM: 1:200 - 1:400

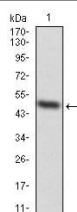
ELISA: 1:10000

Not yet tested in other applications.

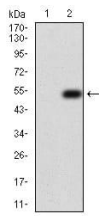
Images



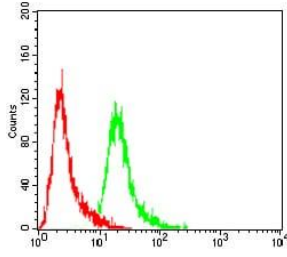
Black line: Control Antigen (100 ng); Purple line: Antigen(10ng); Blue line: Antigen (50 ng); Red line: Antigen (100 ng);



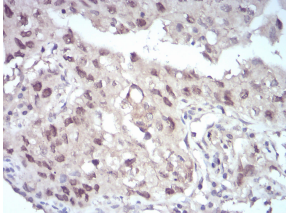
Western blot analysis using EZH2 mAb against human EZH2 (AA: 1-194) recombinant protein. (Expected MW is 48.5 kDa)



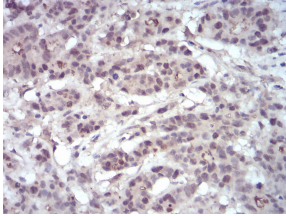
Western blot analysis using EZH2 mAb against HEK293 (1) and EZH2 (AA: 1-194)-hIgGFc transfected HEK293 (2) cell lysate.



Flow cytometric analysis of HeLa cells using EZH2 mouse mAb (green) and negative control (red).



Immunohistochemical analysis of paraffin-embedded lung cancer tissues using EZH2 mouse mAb with DAB staining.



Immunohistochemical analysis of paraffin-embedded colon cancer tissues using EZH2 mouse mAb with DAB staining.

Storage

Store at 4°C short term. Aliquot and store at -20°C long term.

501 Changsheng S Rd, Nanhu Dist, Jiaxing, Zhejiang, China

Tel: 86 21 31007137 | E-mail: save@bt-laboratory.com | www.bt-laboratory.com